

Frathy[®]
1964

Primavera
Estate
Spring Summer
Printemps Eté

2024



INDICE

Violetta	4
Crocus	12
Olivia	24
Venus	30
Agatha	42
Virginia	46
Sveva	50
Charlotte	54
Isabel	58
Fiordaliso	62
Gardenia	66
Alyssum	73
Astrid	74

fratelli®
1964





VIOLETTA
Viscosa Satin



DF1857



554
fragola



6450
blu



9014
avorio







990
nero





DF1933

	
554 fragola	6450 blu
	
9014 avorio	990 nero



DF1934

	
554 fragola	6450 blu
	
9014 avorio	990 nero



CROCUS
Filoscozia®





fratzy[®]
1964





DF1936 culotte + DF1937



Filoscozia® e pizzo Green Label

DF1938

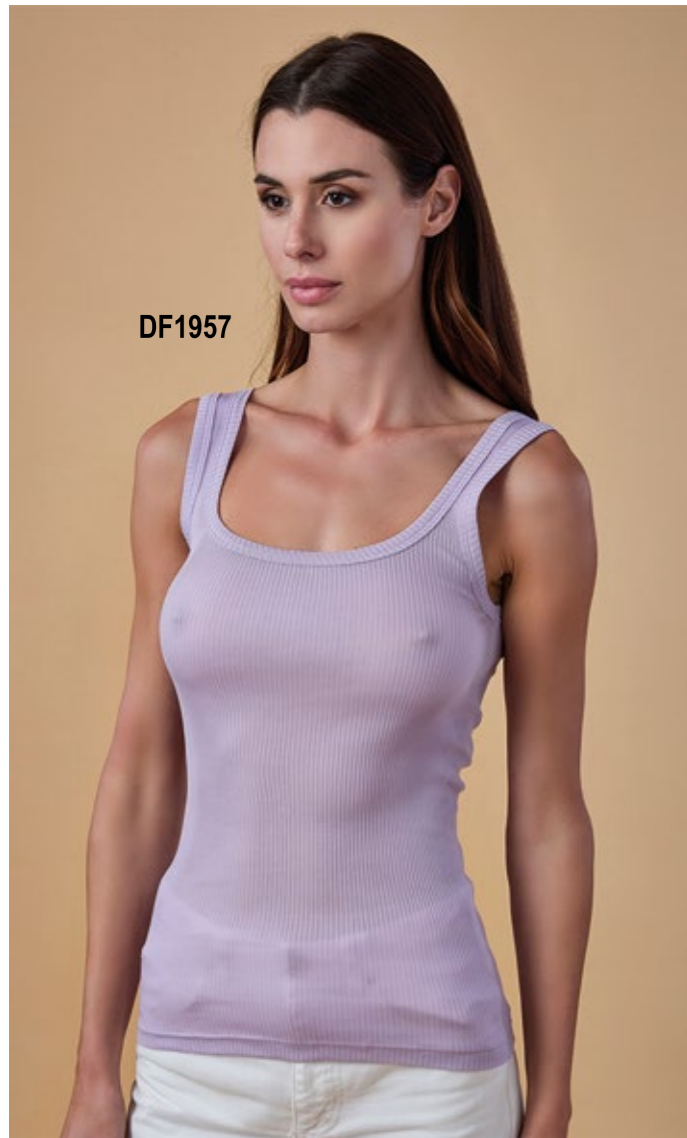


DF1935 slip




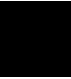


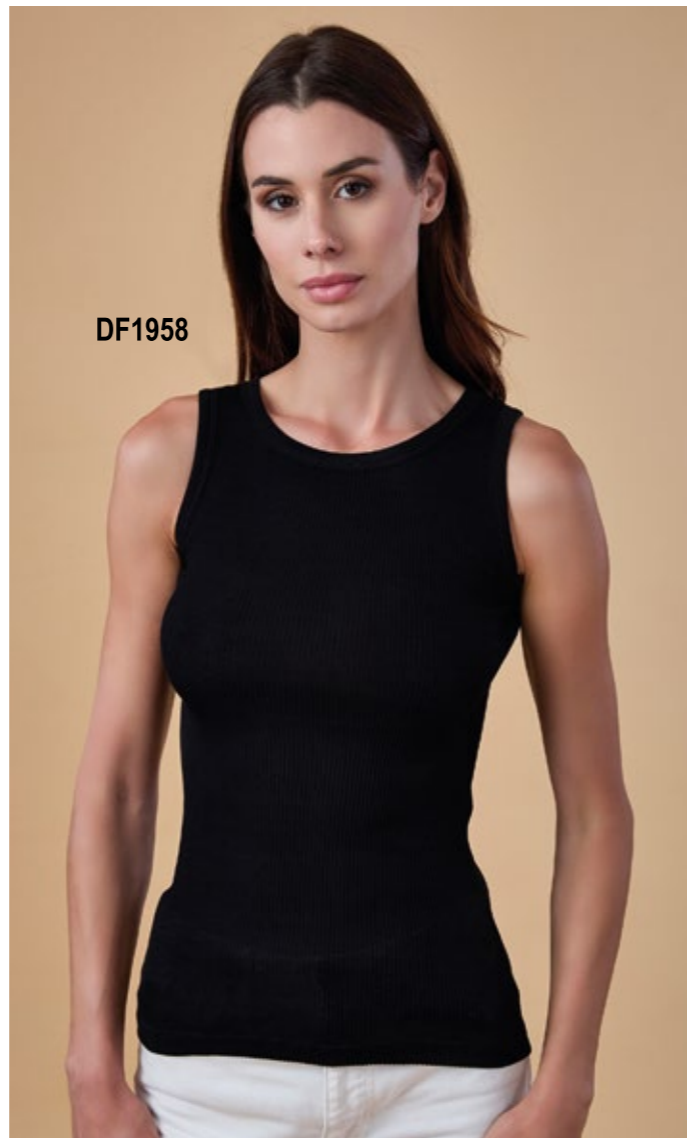


fraty®
1964







DF1957

- 
100
bianco
- 
470
lilla
- 
648
blue
navy
- 
990
nero



DF1958

DF1959

- 
100
bianco
- 
470
lilla
- 
648
blue
navy
- 
990
nero



A woman with long dark hair is standing in a lush field of purple and yellow flowers. She is wearing a blue and white striped sleeveless top and a dark blue skirt with a tie belt. She is looking towards the camera with a slight smile. The background is filled with tall green plants and purple flowers, and the foreground has a dense patch of yellow-green foliage.

OLIVIA
Jersey Viscosa



DF1973



197
bluette
panna



DF1974



197
bluette
panna



DF1975



197
bluette
panna



DF1976



197
bluette
panna



VENUS
Felpa in cotone



fratly®
1964



DF1943



126
ecru



6418
blue
navy



DF1944

DF1950



126
ecru



6418
blue
navy



DF1945



126
ecru



6418
blue
navy



DF1946



126
ecru



6418
blue
navy

DF1949



fraty[®]
1964



DF1971



6418
blue
navy



DF1972



6418
blue
navy



DF1960



6418
blue
navy





AGATHA
Tweed in cotone

DF1929


986
neroargento



DF1930

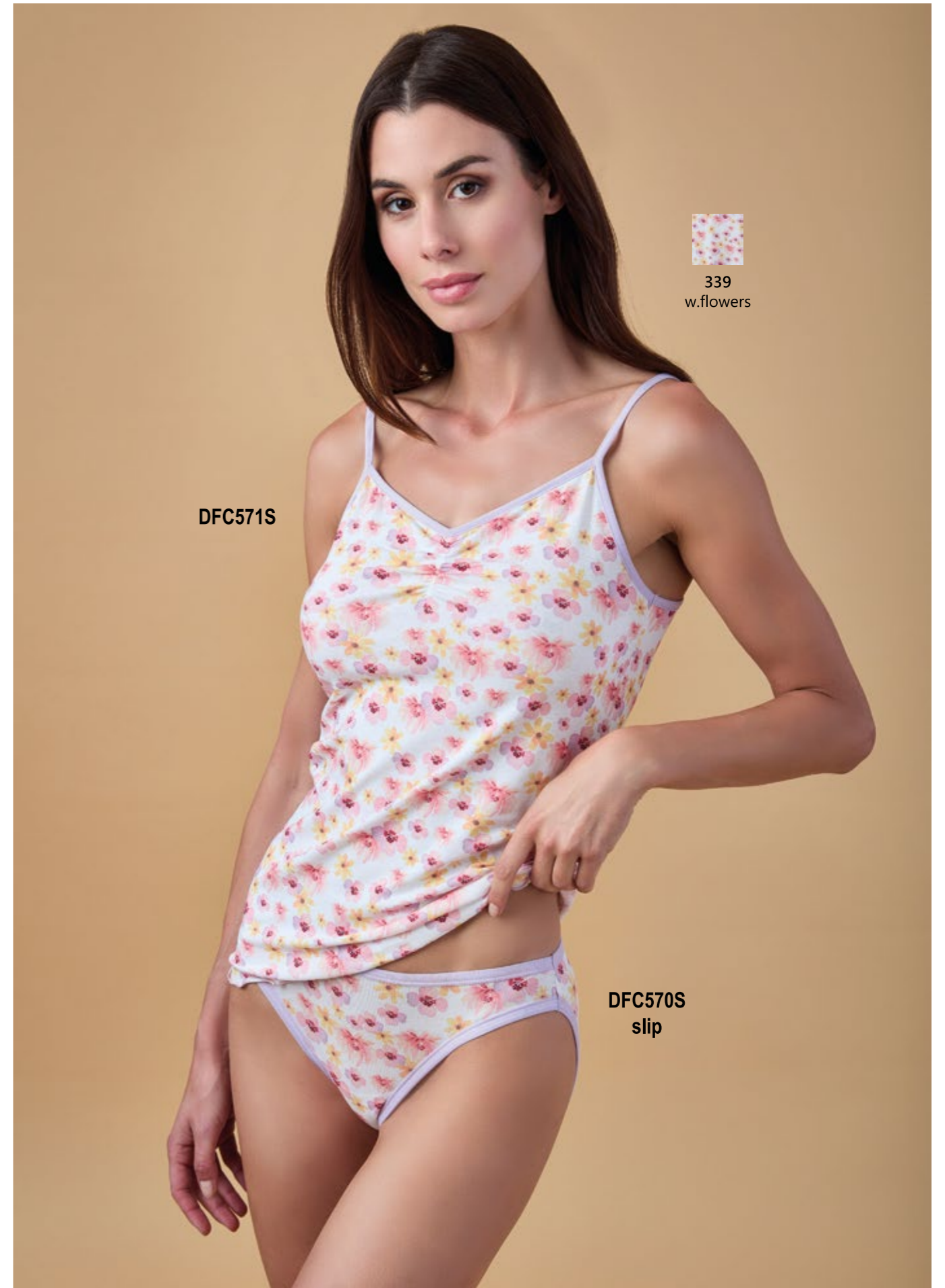
DF1931


986
neroargento





VIRGINIA
Cotone Modal®



339
w.flowers

DFC571S

DFC570S
slip



DFC572S



339
w.flowers

DFC574S



DFC573S



339
w.flowers

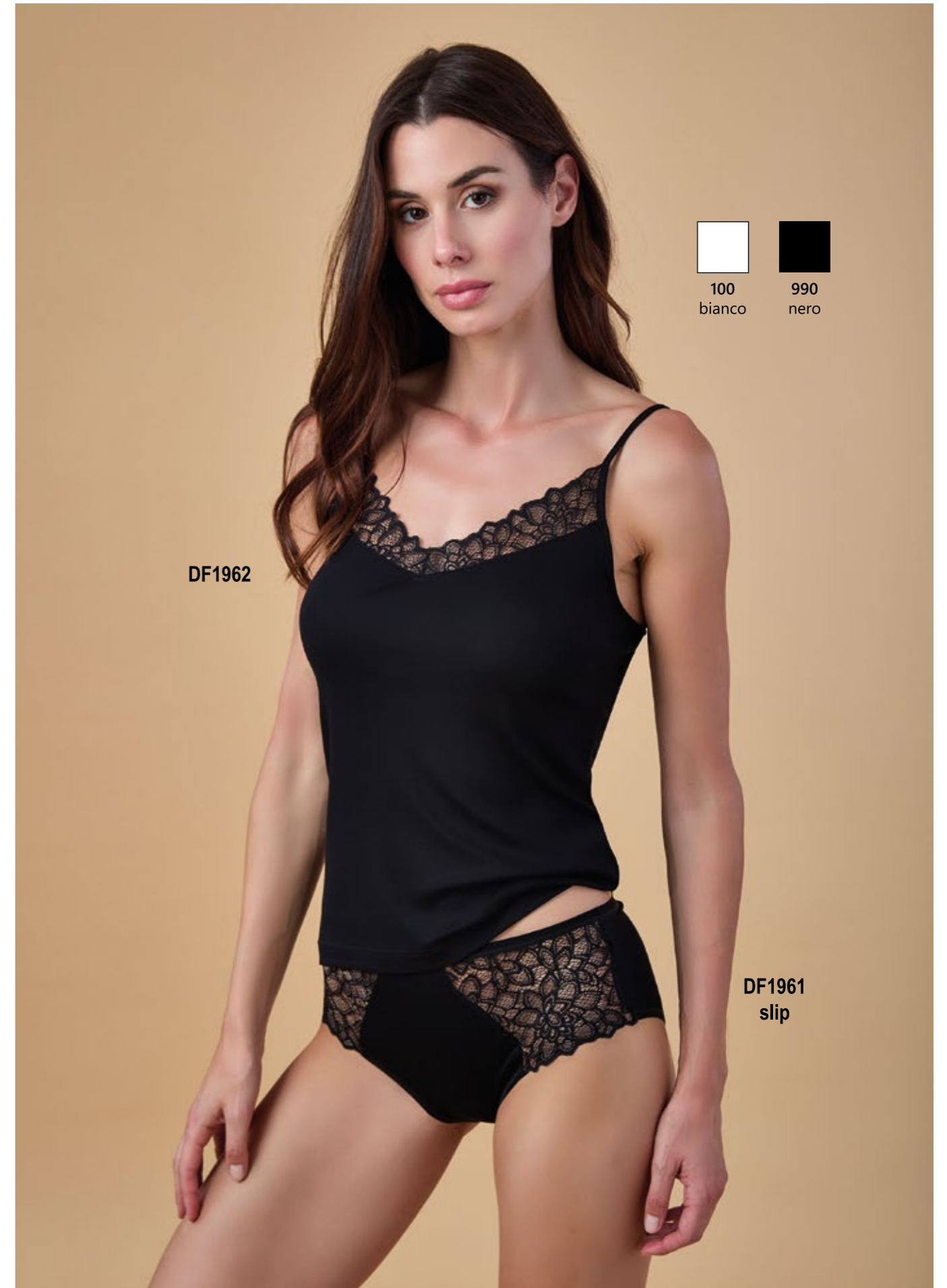


488
glicine

DFC574

SVEVA

Micromodal®



100 bianco
990 nero

DF1962

DF1961
slip



CHARLOTTE

Jersey Micromodal®

DF1939



470
lilla



9014
avorio
balza lilla



990
nero



DF1940



470
lilla



9014
avorio
balza lilla



990
nero







ISABEL
Jersey
Micromodal®



DF1951

-  470
lilla
-  9031
grigio
melange
-  990
nero



DF1952

-  470
lilla
-  9031
grigio
melange
-  990
nero



DF1953



470
lilla



9031
grigio
melange



990
nero



DF1954



470
lilla



9031
grigio
melange



990
nero

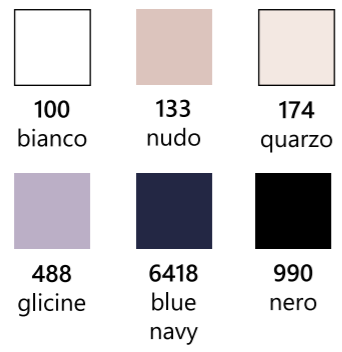
FIORDALISO
Cotone Modal®





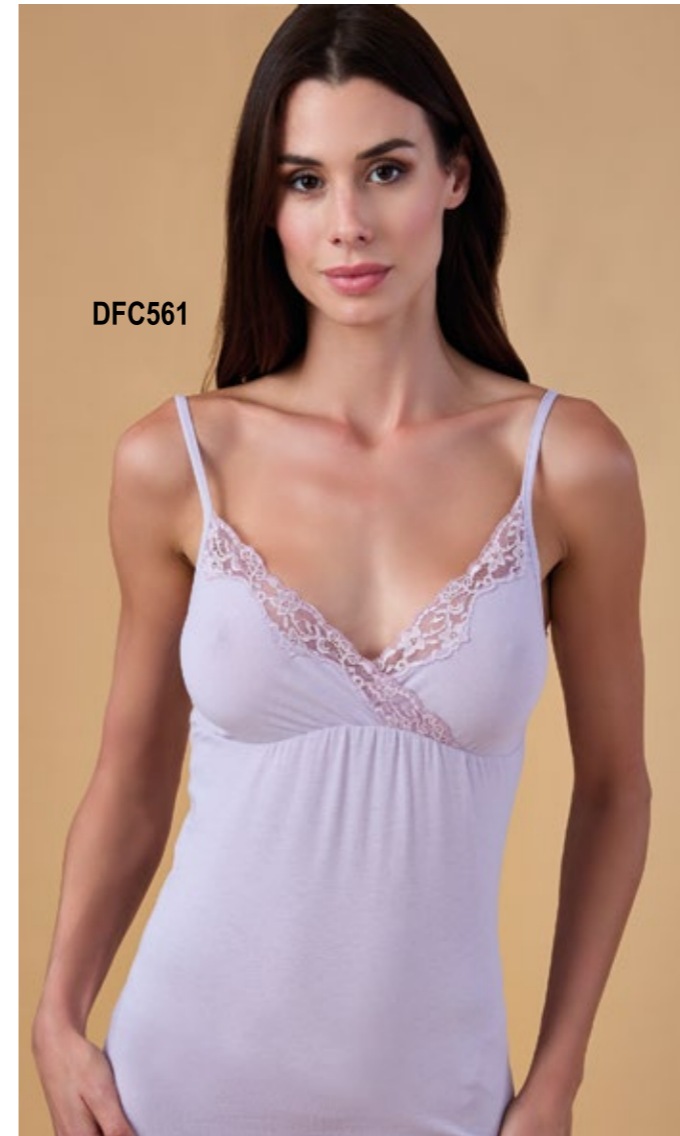
DFC492

DFC491
slip

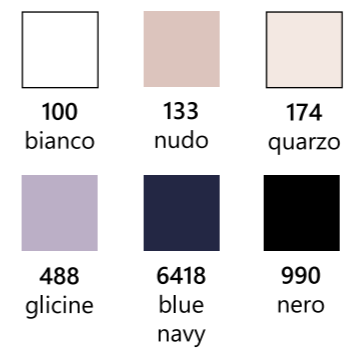


DFC501

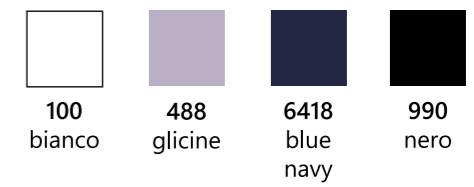
DFC533
slip



DFC561



DFC562



A woman with long brown hair, wearing a black sports bra and black shorts, stands by the edge of a swimming pool. The pool is filled with clear blue water, and the background is a vast, lush green valley with rolling hills under a clear blue sky. The woman is looking towards the camera with a slight smile.

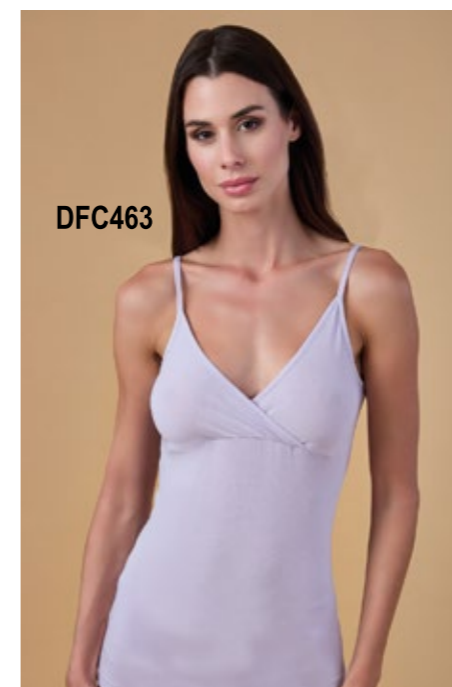
GARDENIA
Cotone Modal®



- 100
bianco
- 990
nero
- 648
blue
navy

DF567

DF566

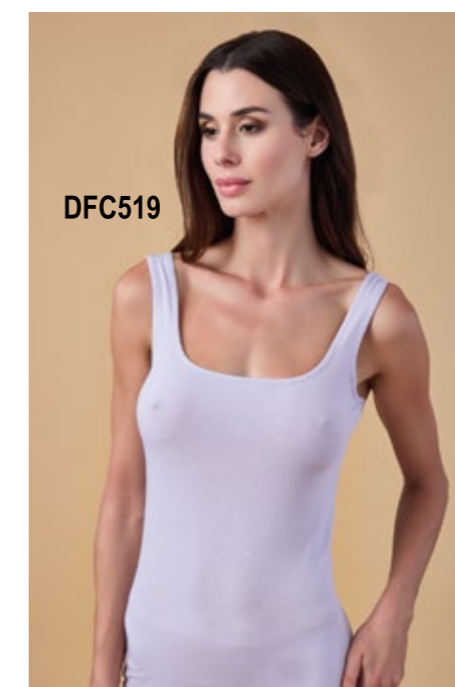


DFC463



DFC413

*non disponibile nel colore
verde 792



DFC519

- 100
bianco
- 133
nudo
- 174
quarzo
- 648
blue
navy
- 990
nero
- 488
glicine
- 792
verde



disponibile anche nei colori quarzo e glicine



100
bianco



990
nero



6418
blue
navy



792
verde



DFC555



DFC556



DFC569



100
bianco



990
nero



6418
blue
navy



792
verde

ALYSSUM

Cotone elastico

DF1525



100
bianco



990
nero



6418
blue
navy





ASTRID
Tulle ricamato

DF1965

950
nero lurex

DF1968

950
nero lurex

DF1967

DF1966

DF1969



950
nero lurex



DF1970



950
nero lurex





fraly
1964

Sistema Tessile s.r.l.
Bergamo (Italy)

T + 39 035 575707

F + 39 035 573701

info@fraly.it www.fraly.it