



Fraty[®]
1964

FW 2023/2024



fraty
1964

INDICE

| | |
|-------------------|----|
| <i>Lavanda</i> | 5 |
| <i>Lilibet</i> | 31 |
| <i>Glicine</i> | 37 |
| <i>Charme</i> | 41 |
| <i>Violetta</i> | 51 |
| <i>Charlize</i> | 59 |
| <i>Kristen</i> | 65 |
| <i>Natalie</i> | 71 |
| <i>Venus</i> | 76 |
| <i>Rachel</i> | 82 |
| <i>Orchidea</i> | 86 |
| <i>Shape</i> | 88 |
| <i>New Secret</i> | 89 |

fraty[®]
1964



Lavanda

Lana Seta



DF7139



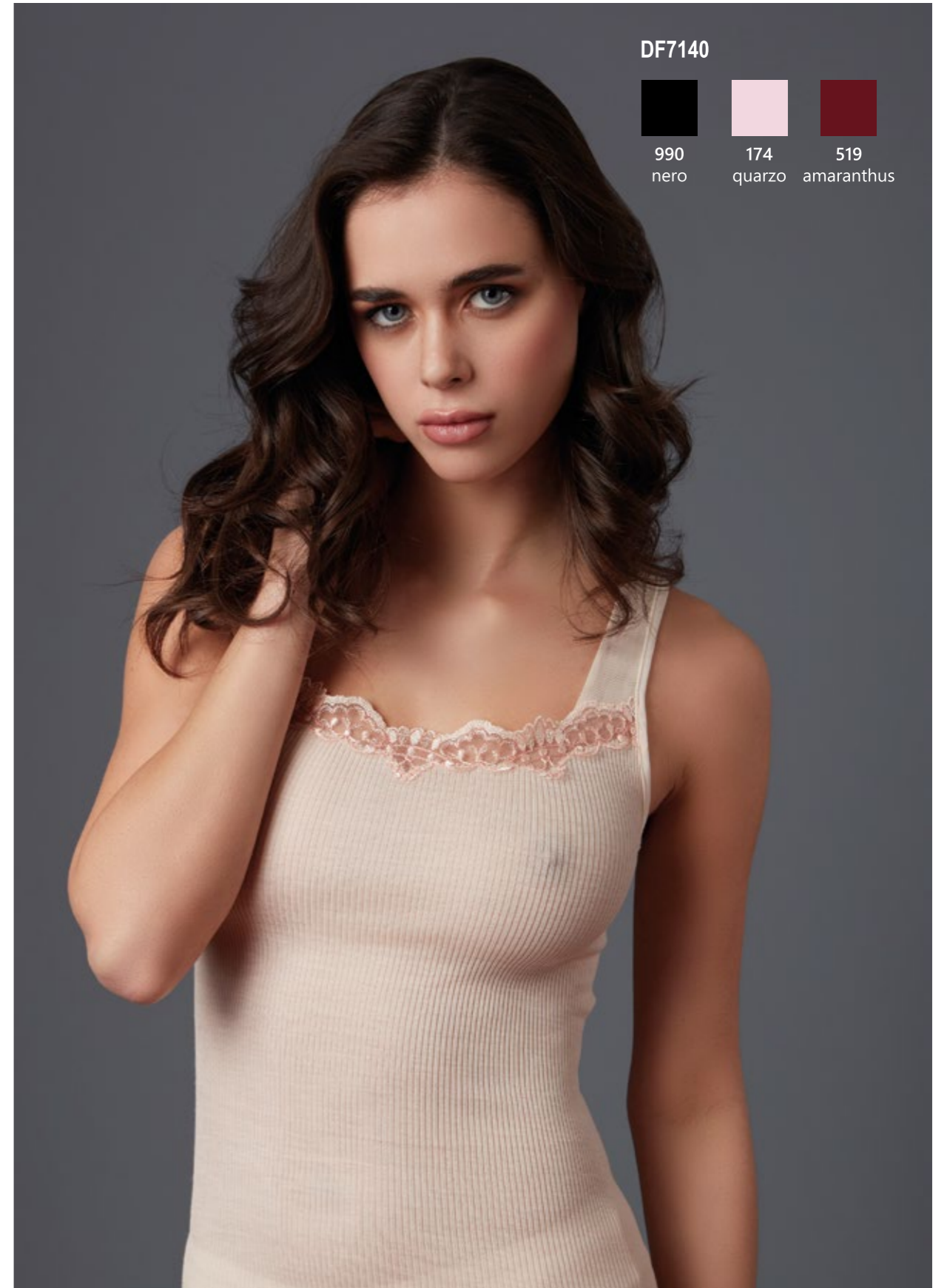
990
nero



174
quarzo



519
amaranthus



DF7140



990
nero

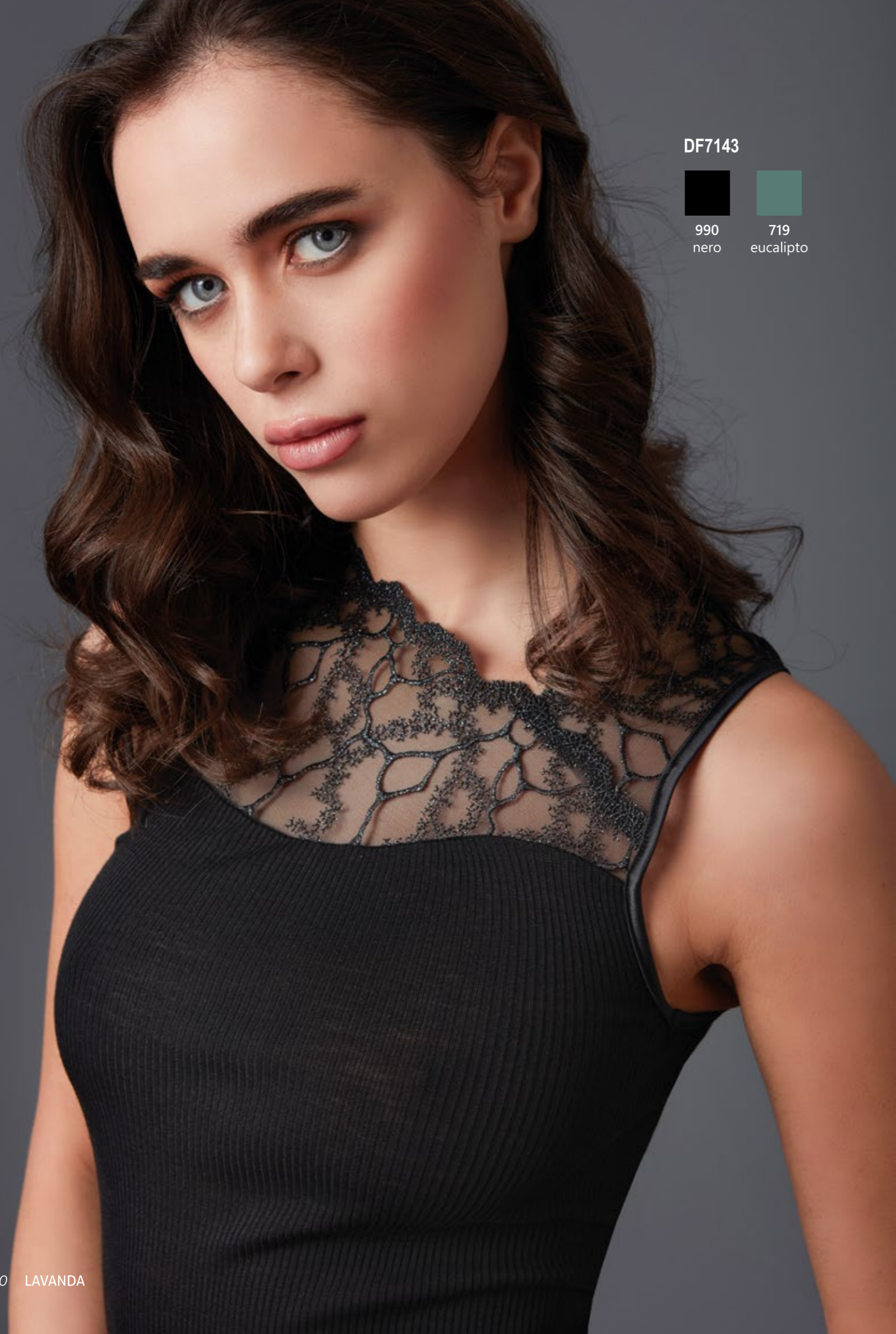


174
quarzo



519
amaranthus





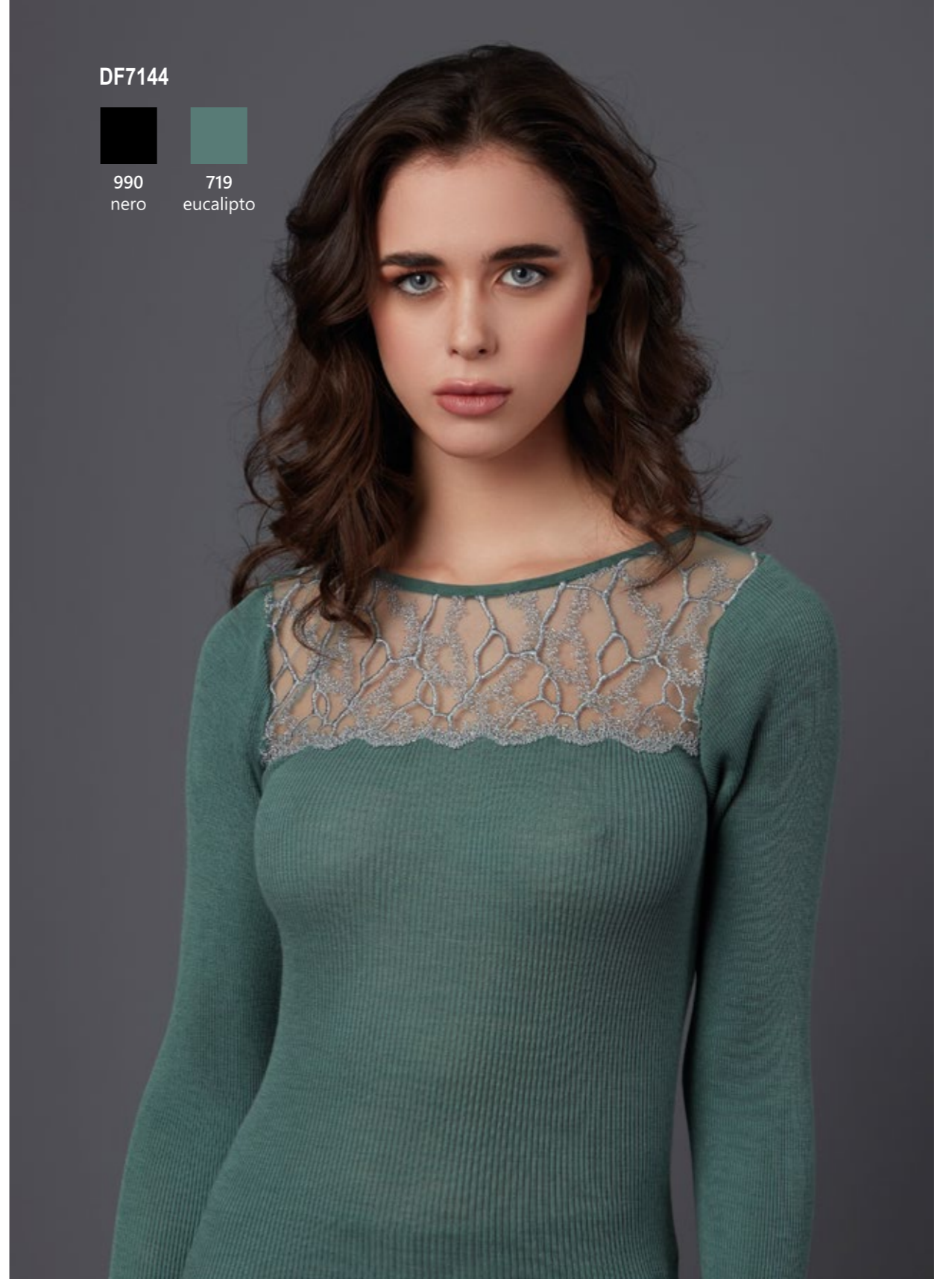
DF7143



990
nero



719
eucalipto



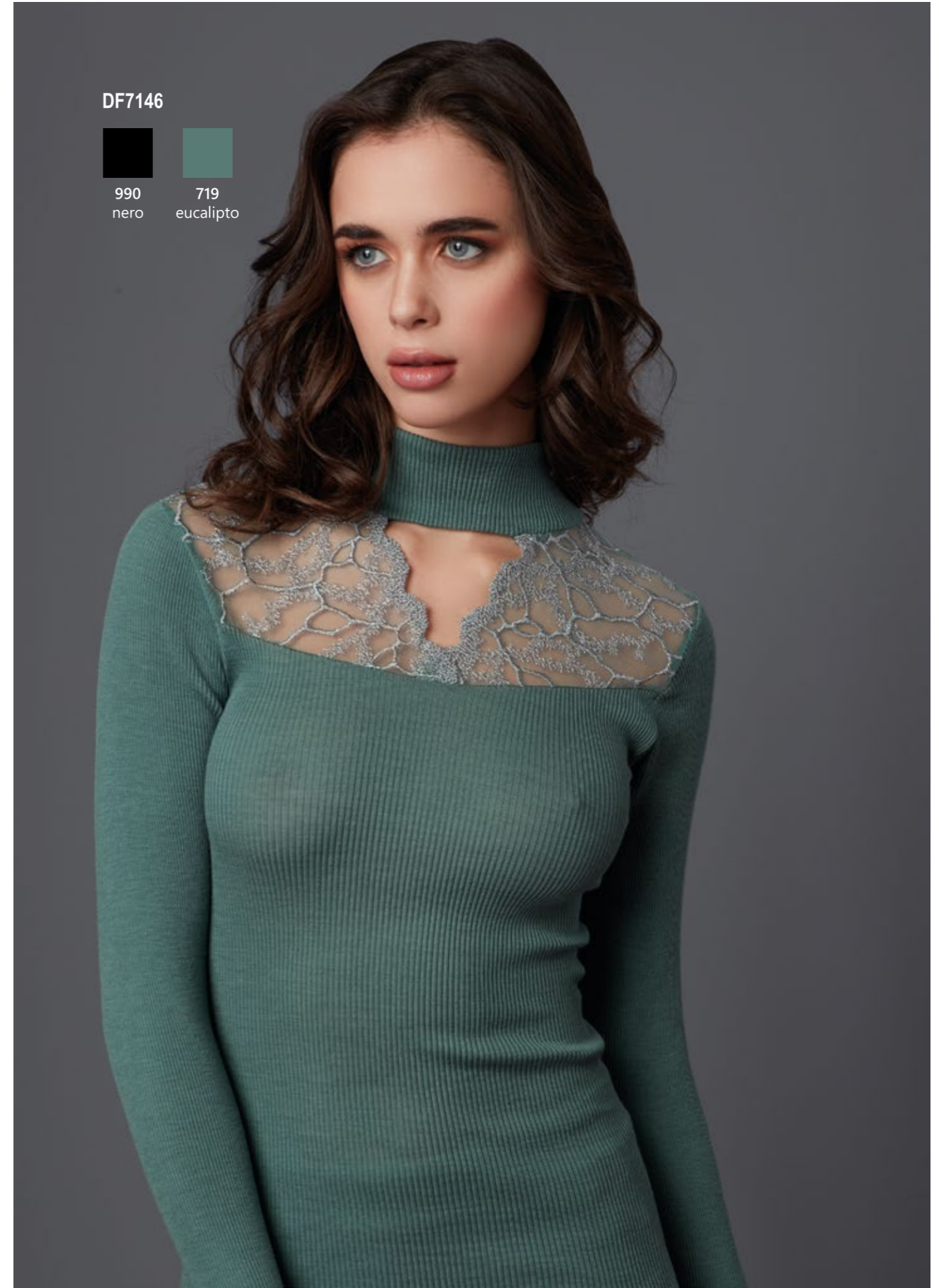
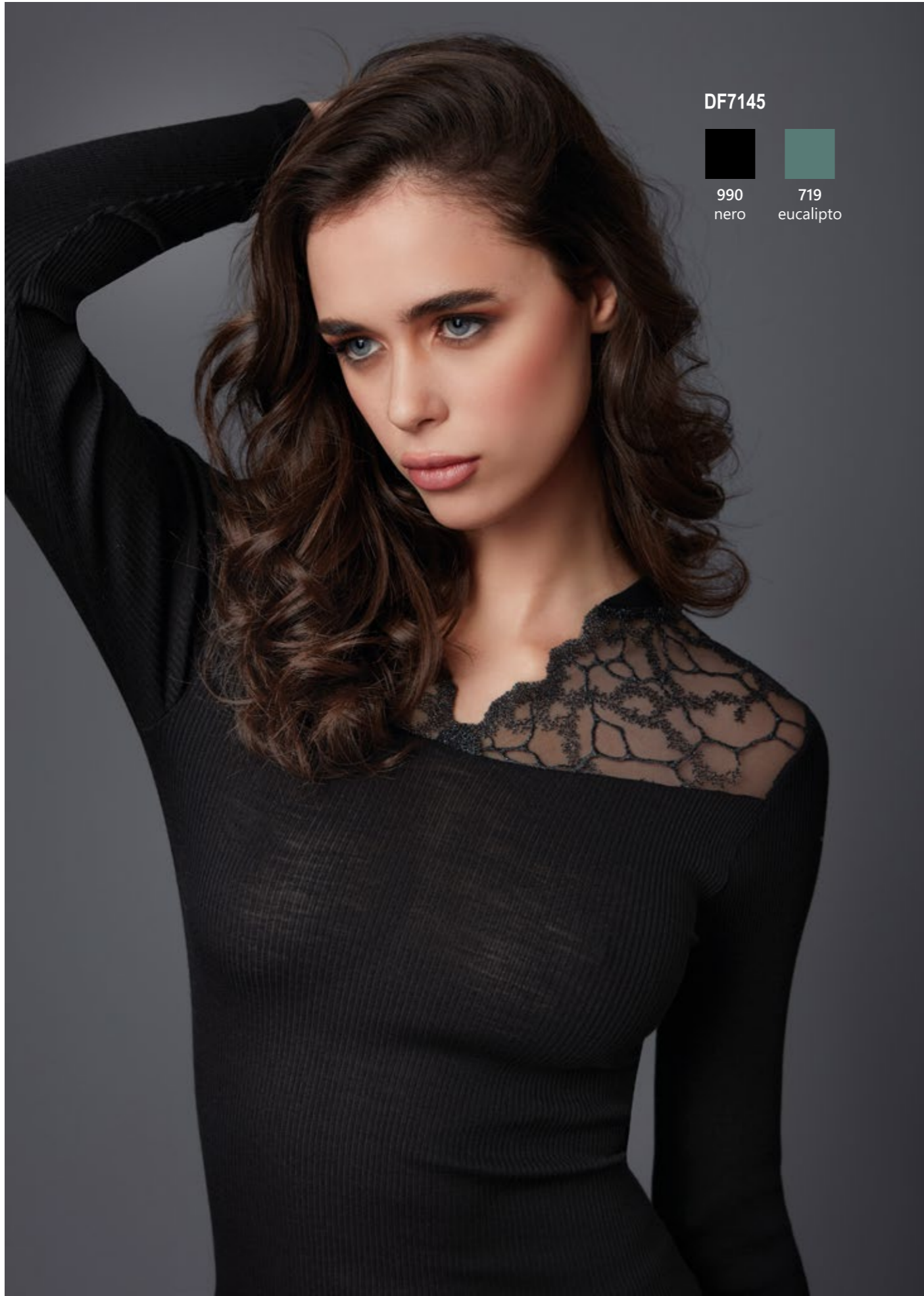
DF7144



990
nero



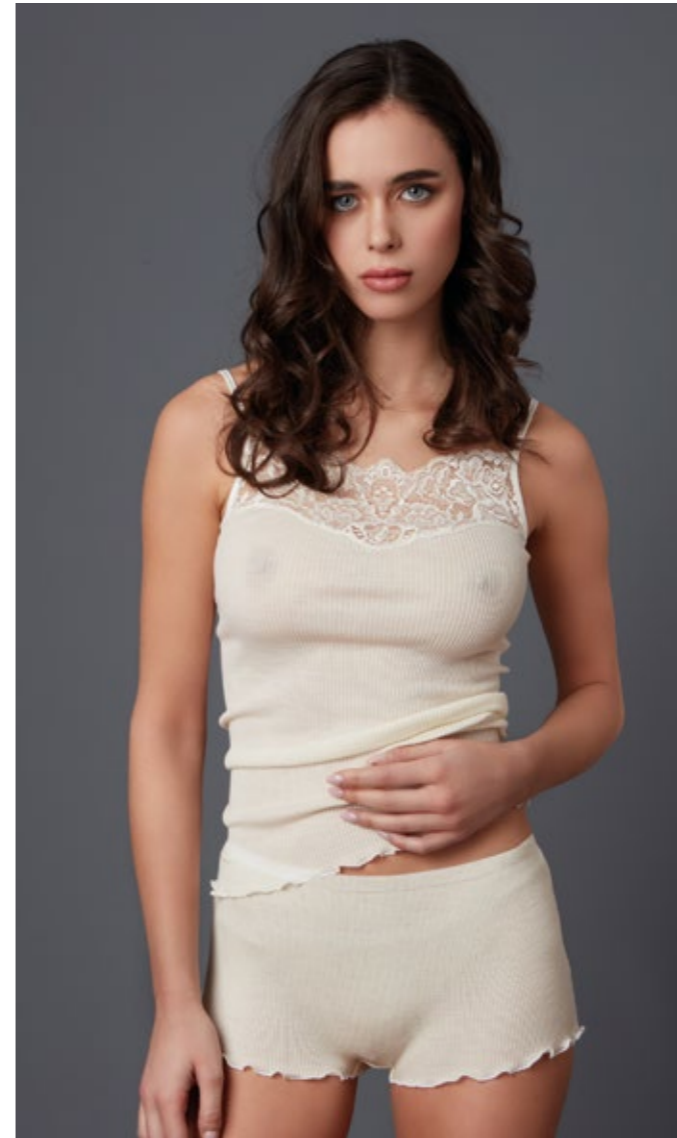
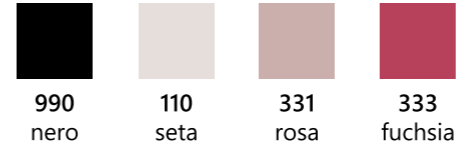
719
eucalipto



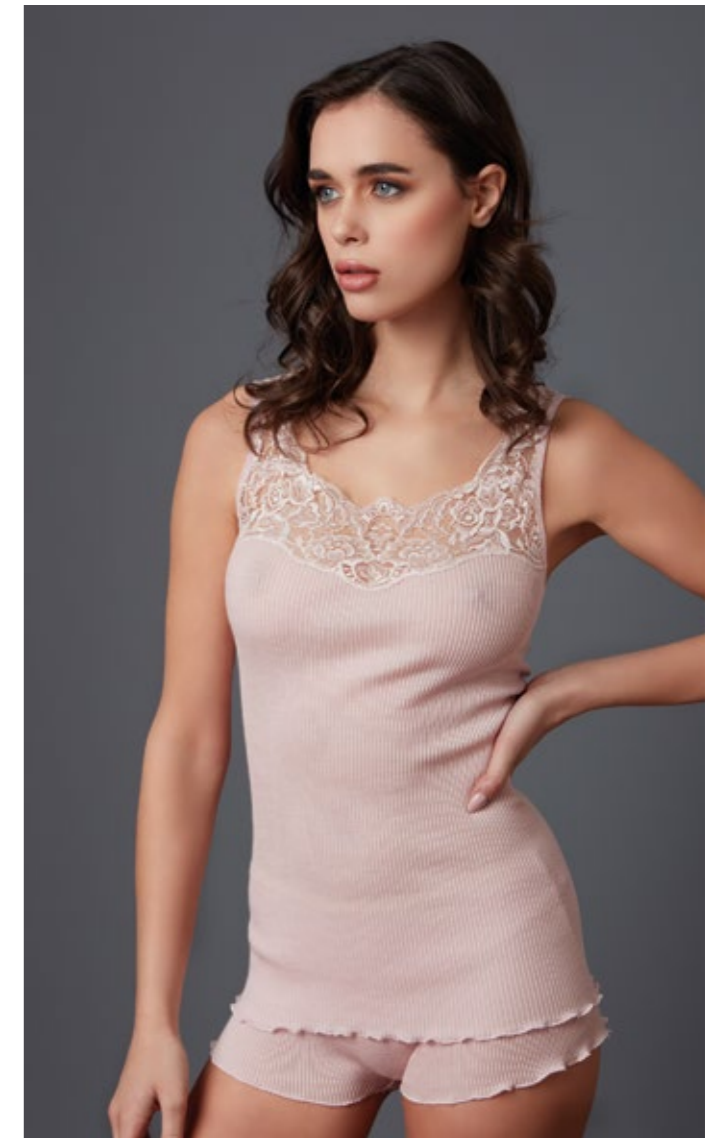
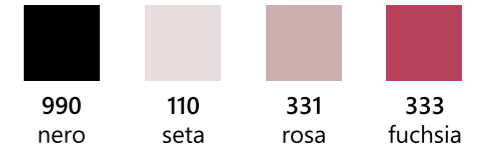
fratly[®]
1964



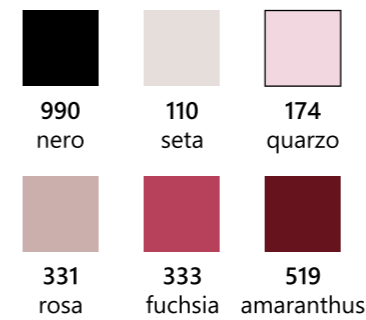
DF7147



DF7148

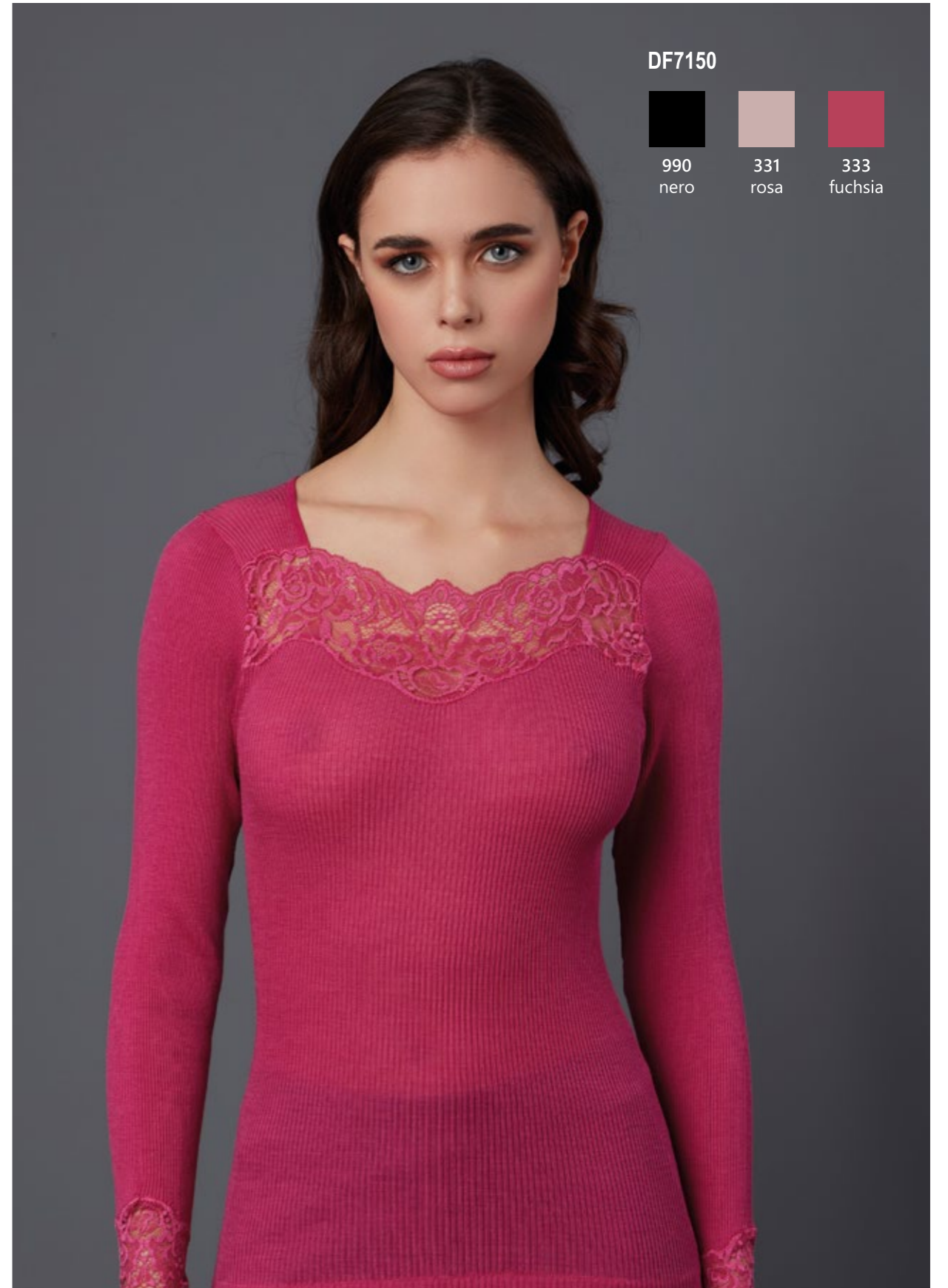
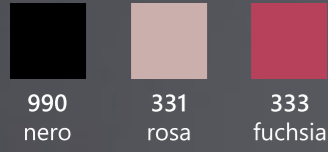


DF7152
culotte

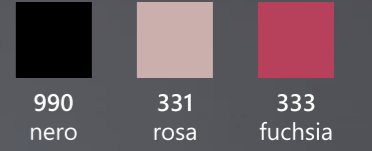




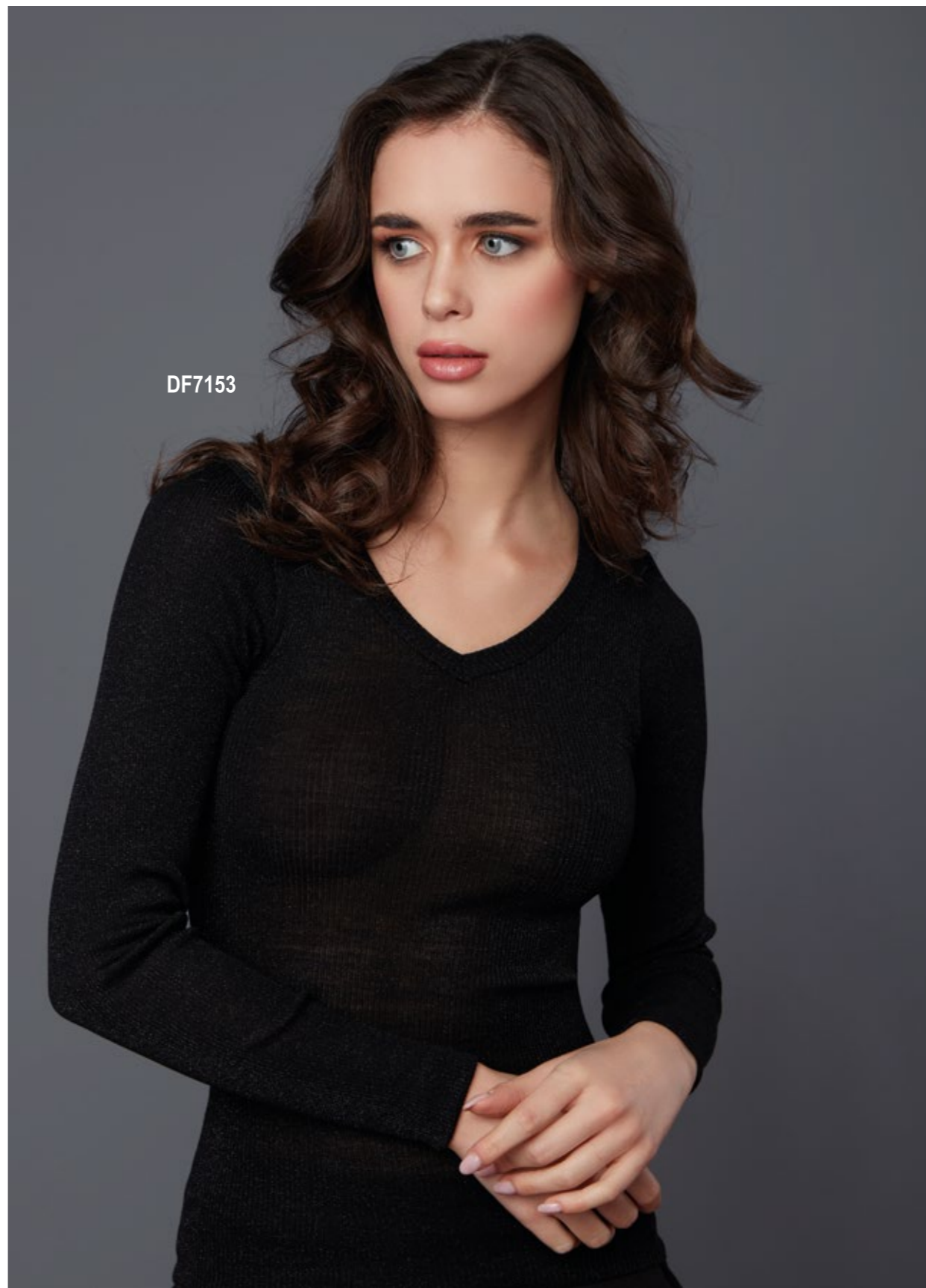
DF7149



DF7150

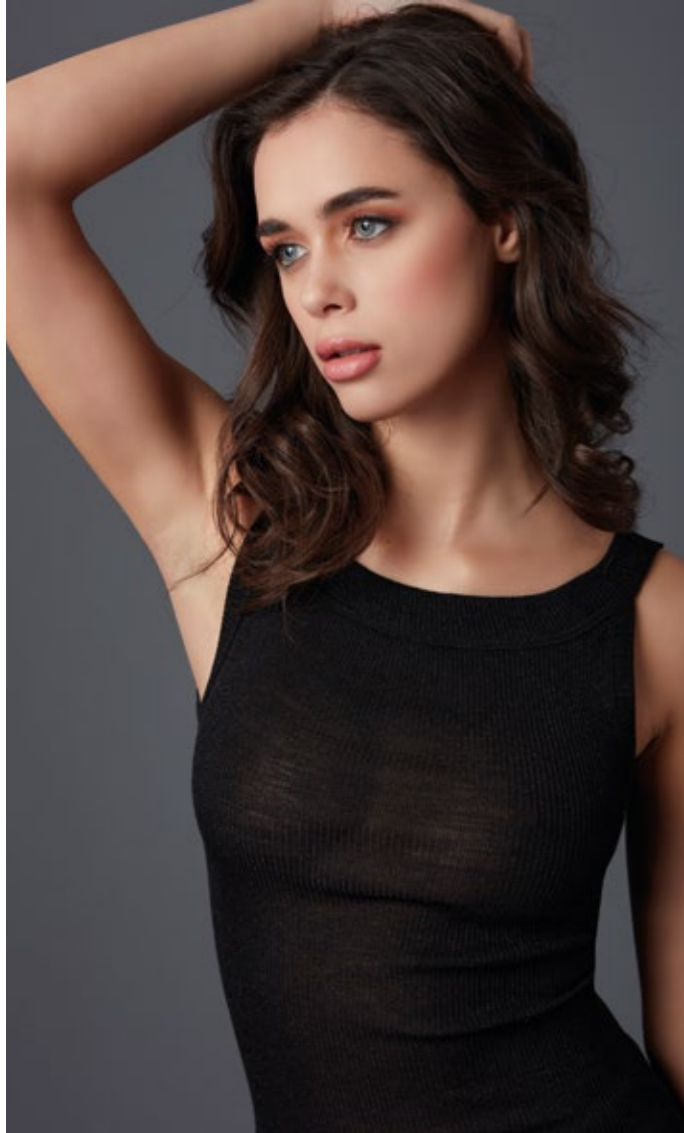


fraty®
1964



DF7153



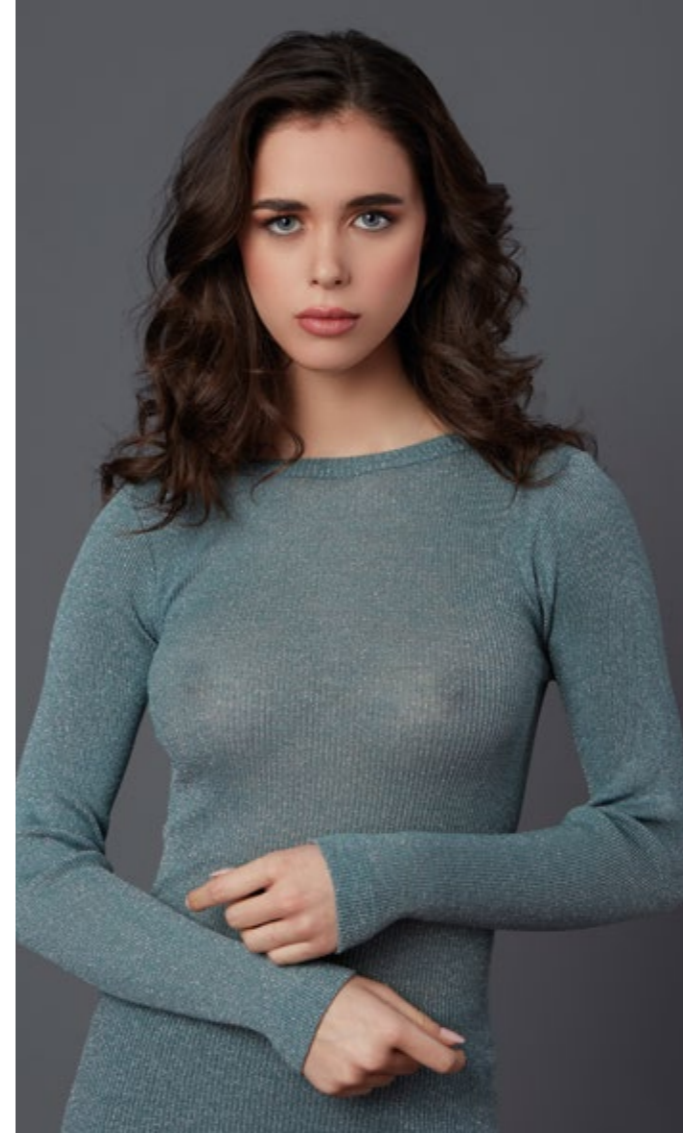


DF7089

- | | | |
|-----------------------------|---------------------------|------------------------|
| | | |
| 931 nero argento | 950 nero lurex | 826 nocciola oro |
| | | |
| 726 eucalipto argento | 343 fuchsia argento | |

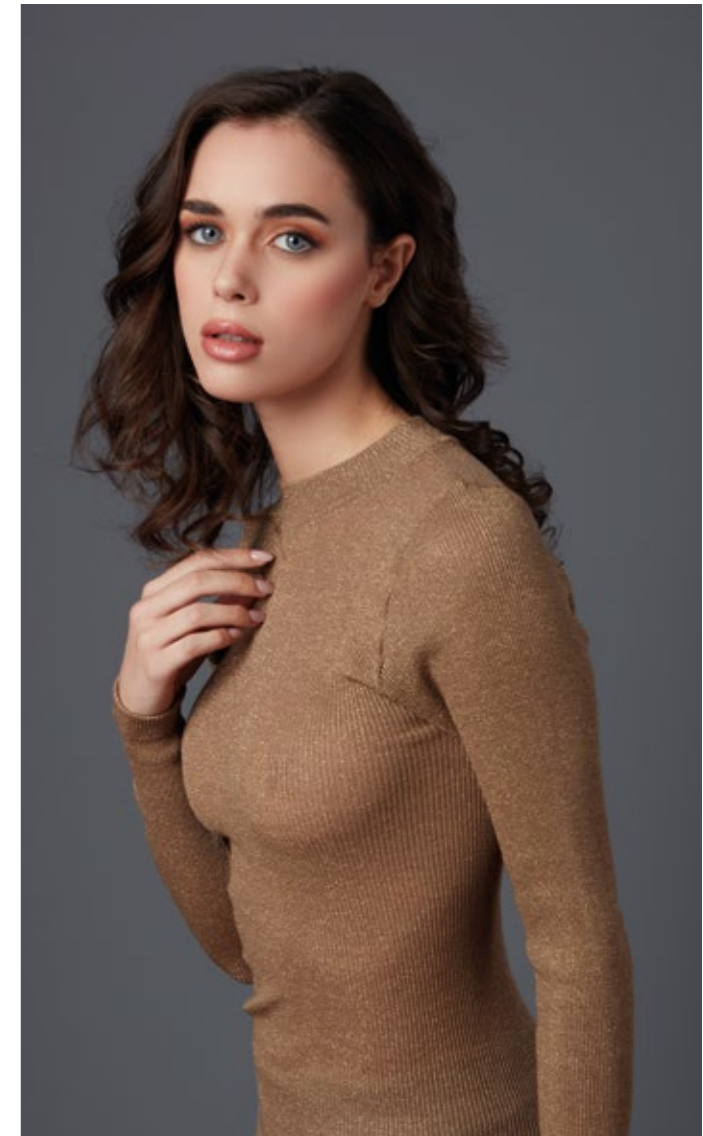


DF7090

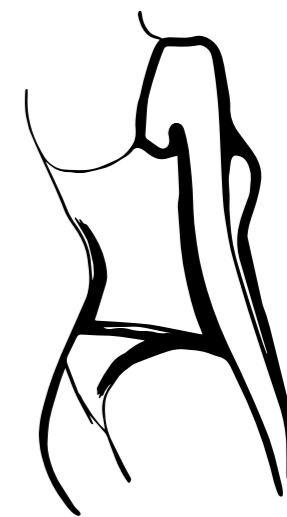


DF7091

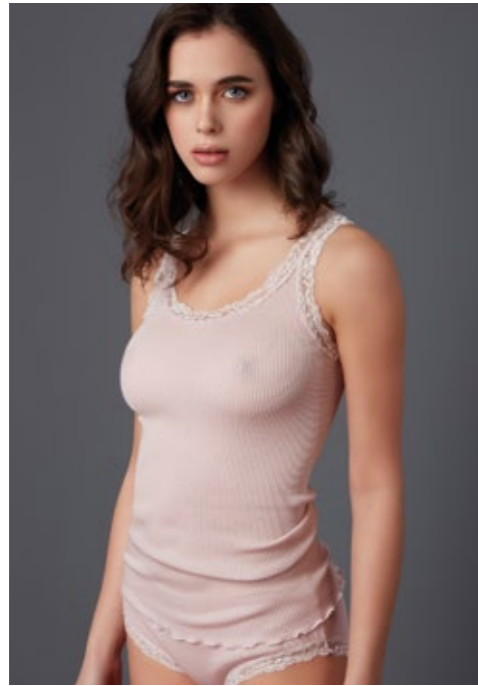
- | | | |
|-----------------------------|---------------------------|------------------------|
| | | |
| 931 nero argento | 950 nero lurex | 826 nocciola oro |
| | | |
| 726 eucalipto argento | 343 fuchsia argento | |



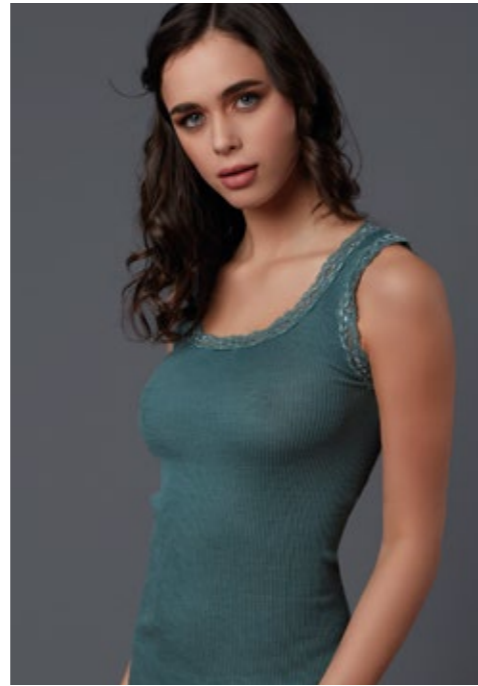
DF7092



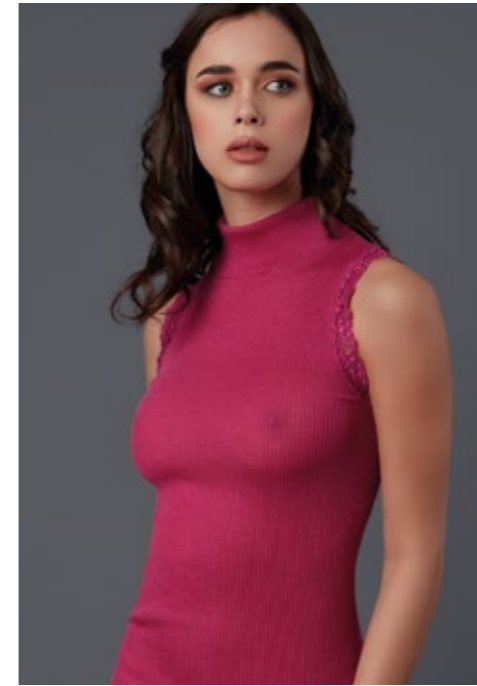
fraty
1964



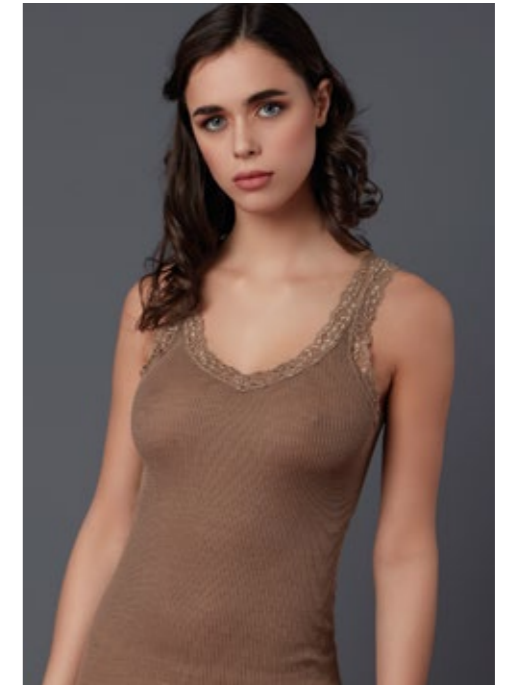
DF6900
DF7151 slip



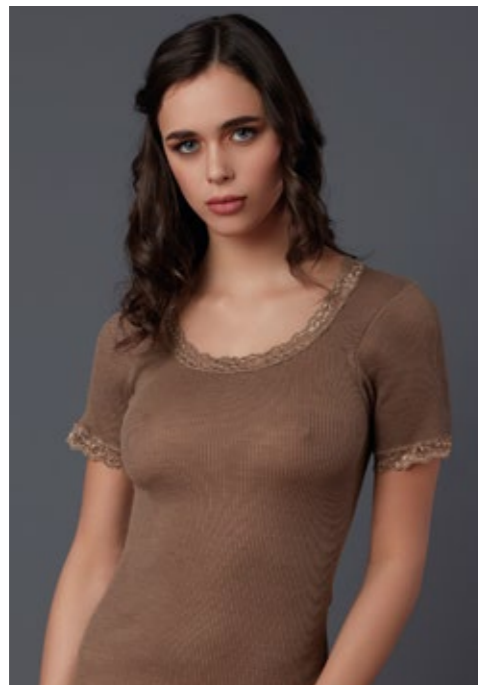
DF6901



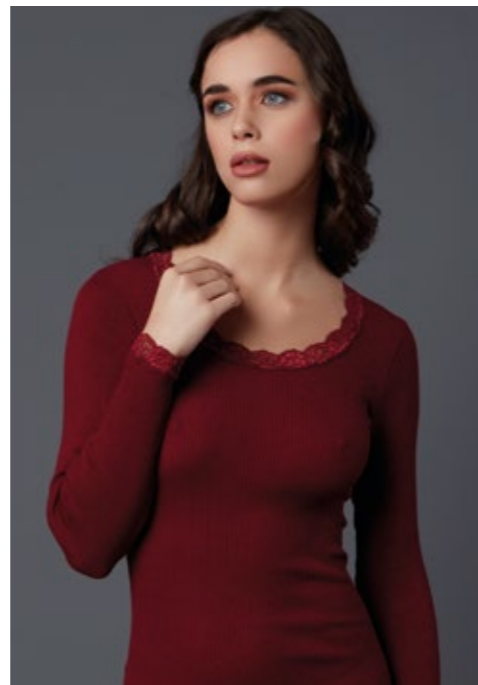
DF6904



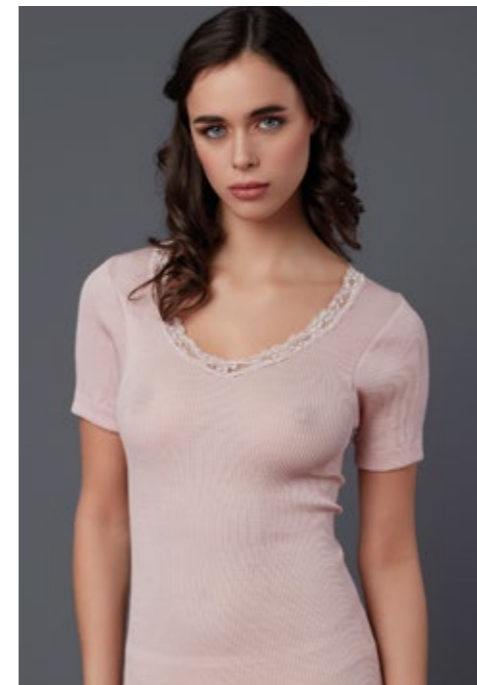
DF6975



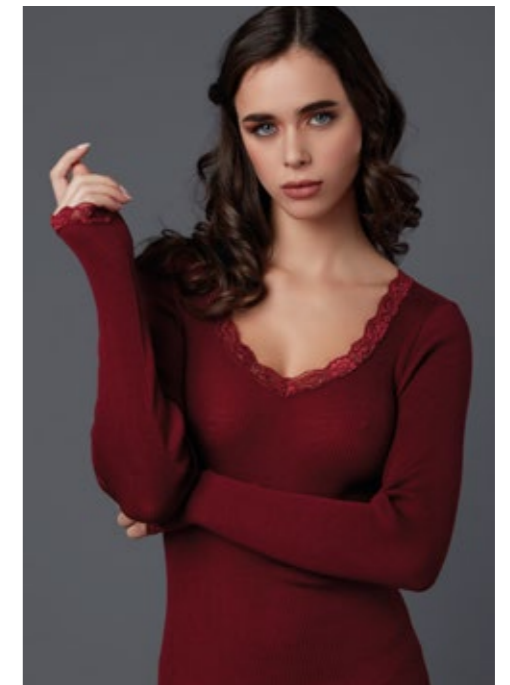
DF6902



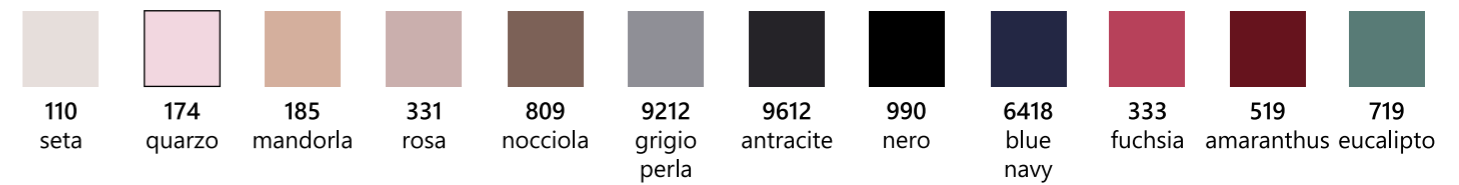
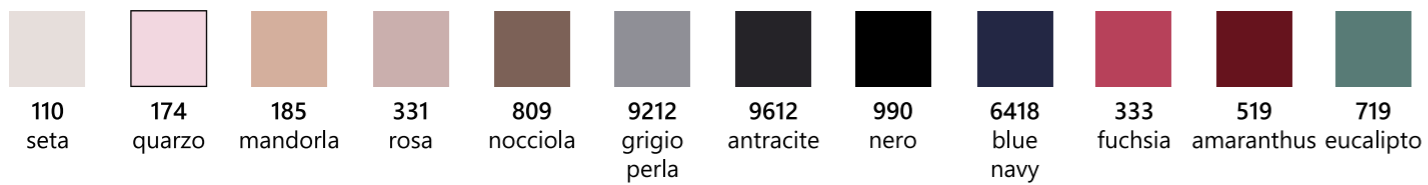
DF6903



DF6976

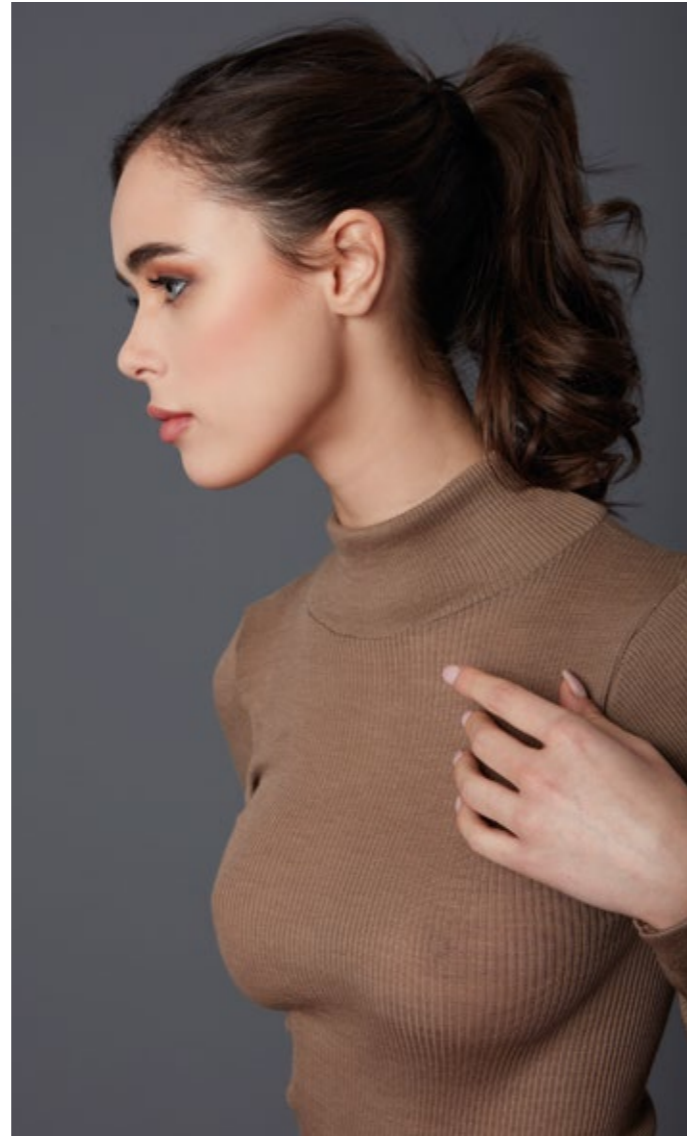


DF6977

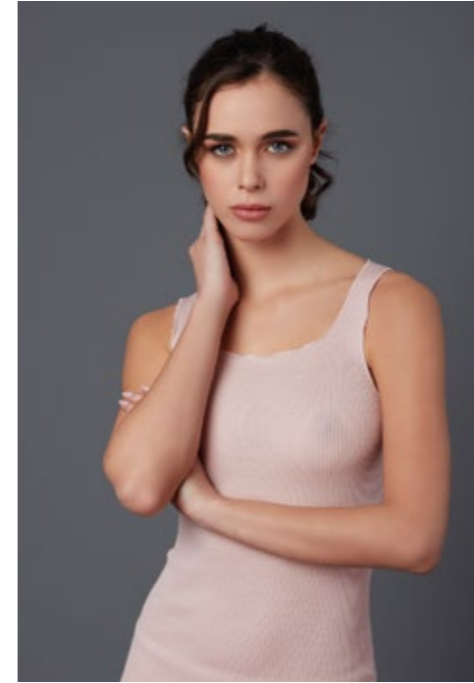




DF6935



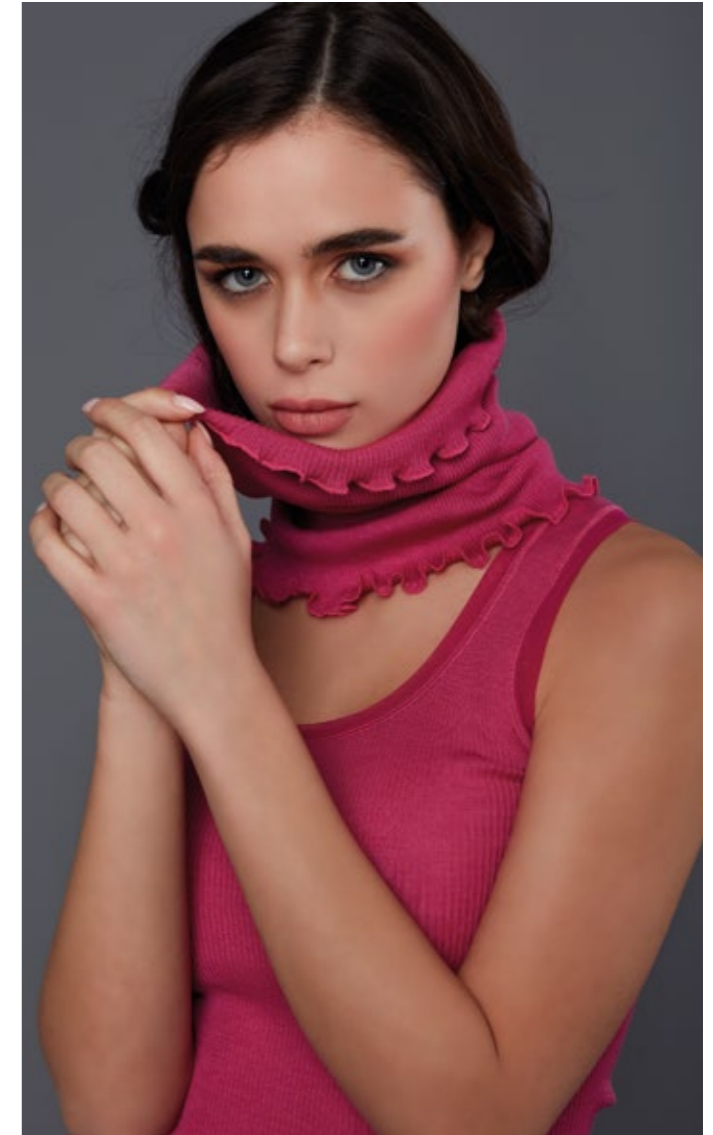
DF6937 NON DISPONIBILE NEL COLORE 110 SETA



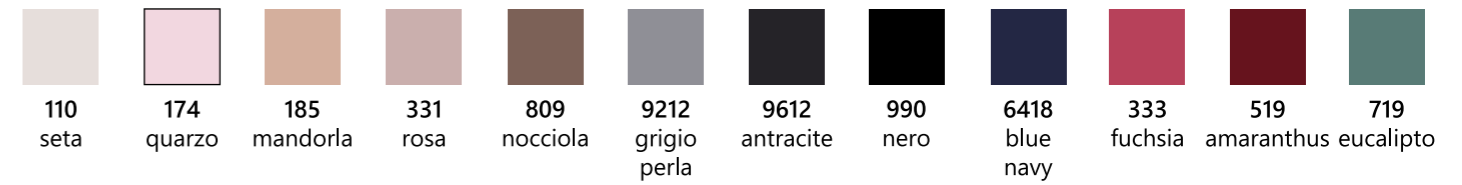
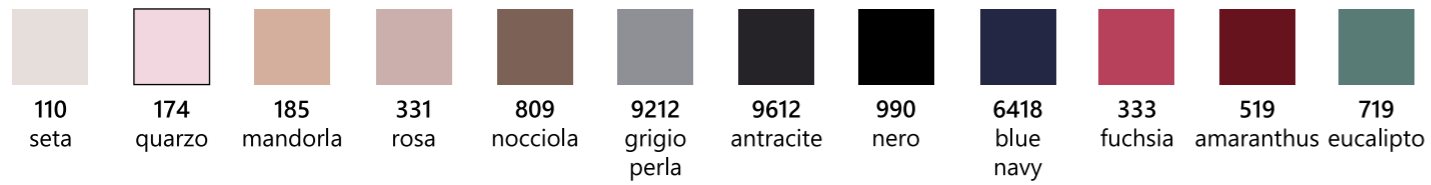
DF7086

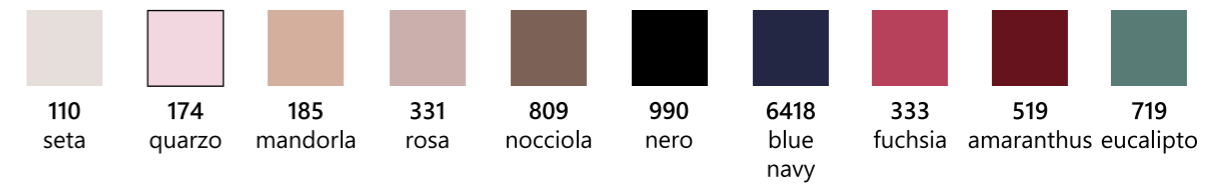
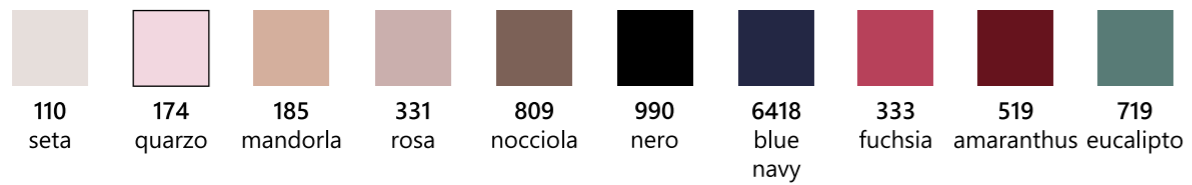
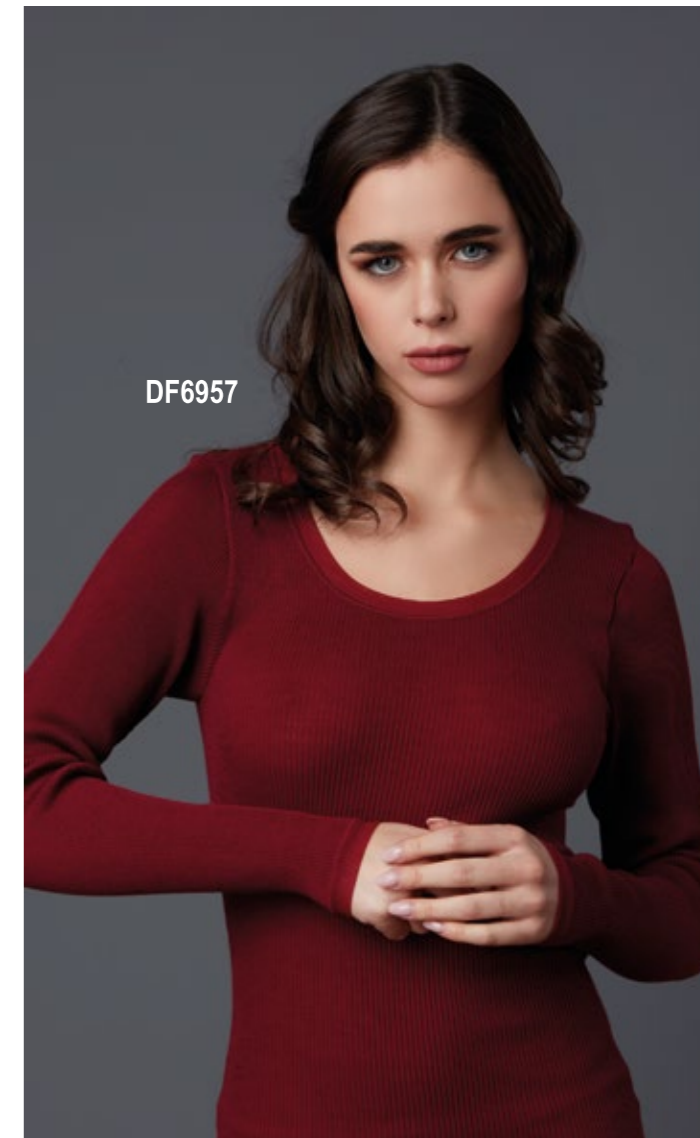
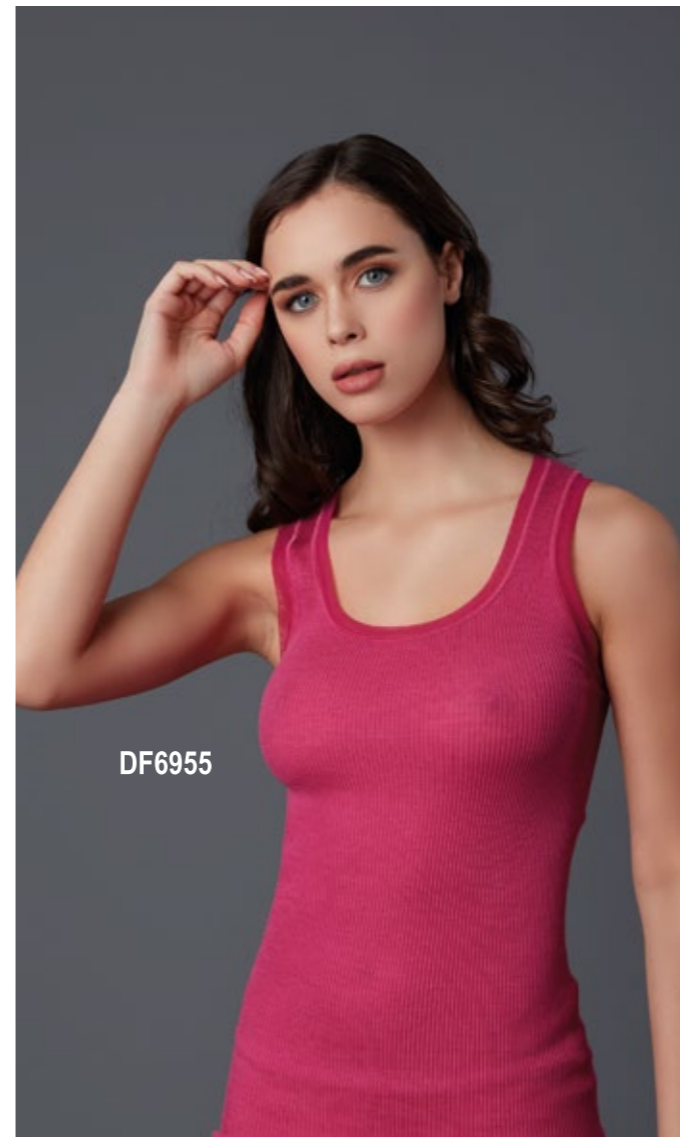
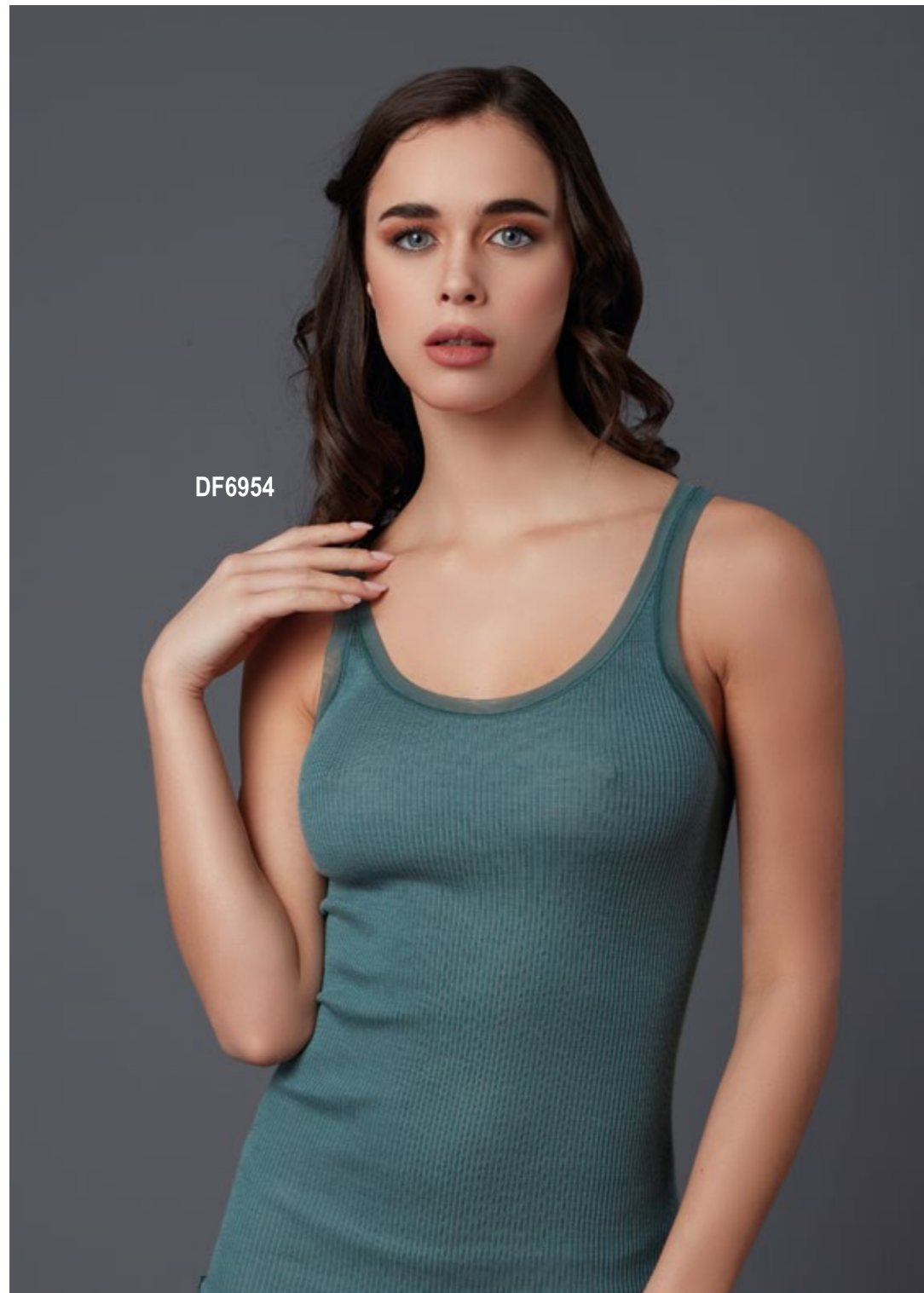


DF7087



* DF7088





fraty[®]
1964



Lilibet
Lana Seta



DF7154



990
nero



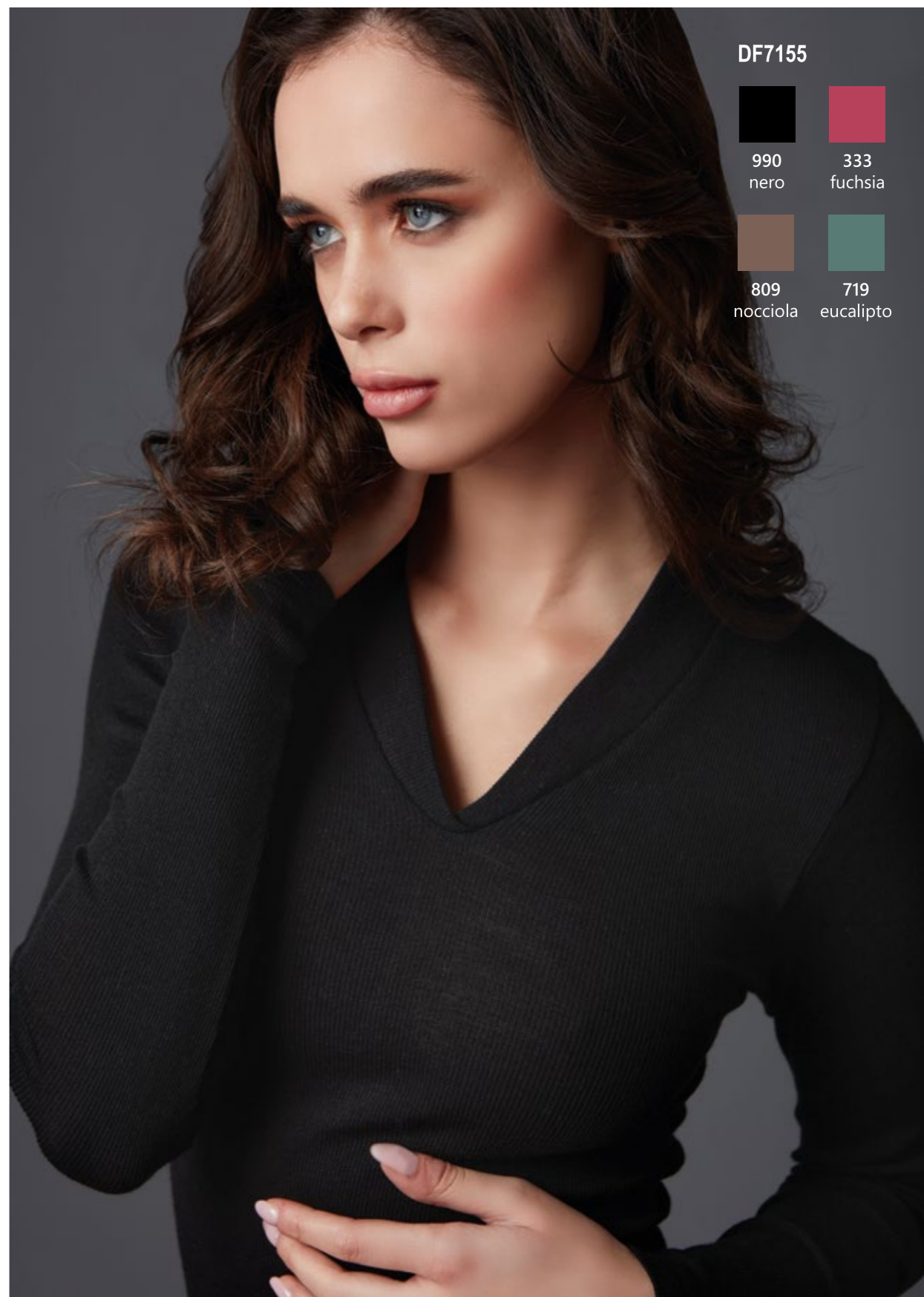
333
fucsia



809
nocciola



719
eucalipto



DF7155



990
nero



333
fucsia



809
nocciola

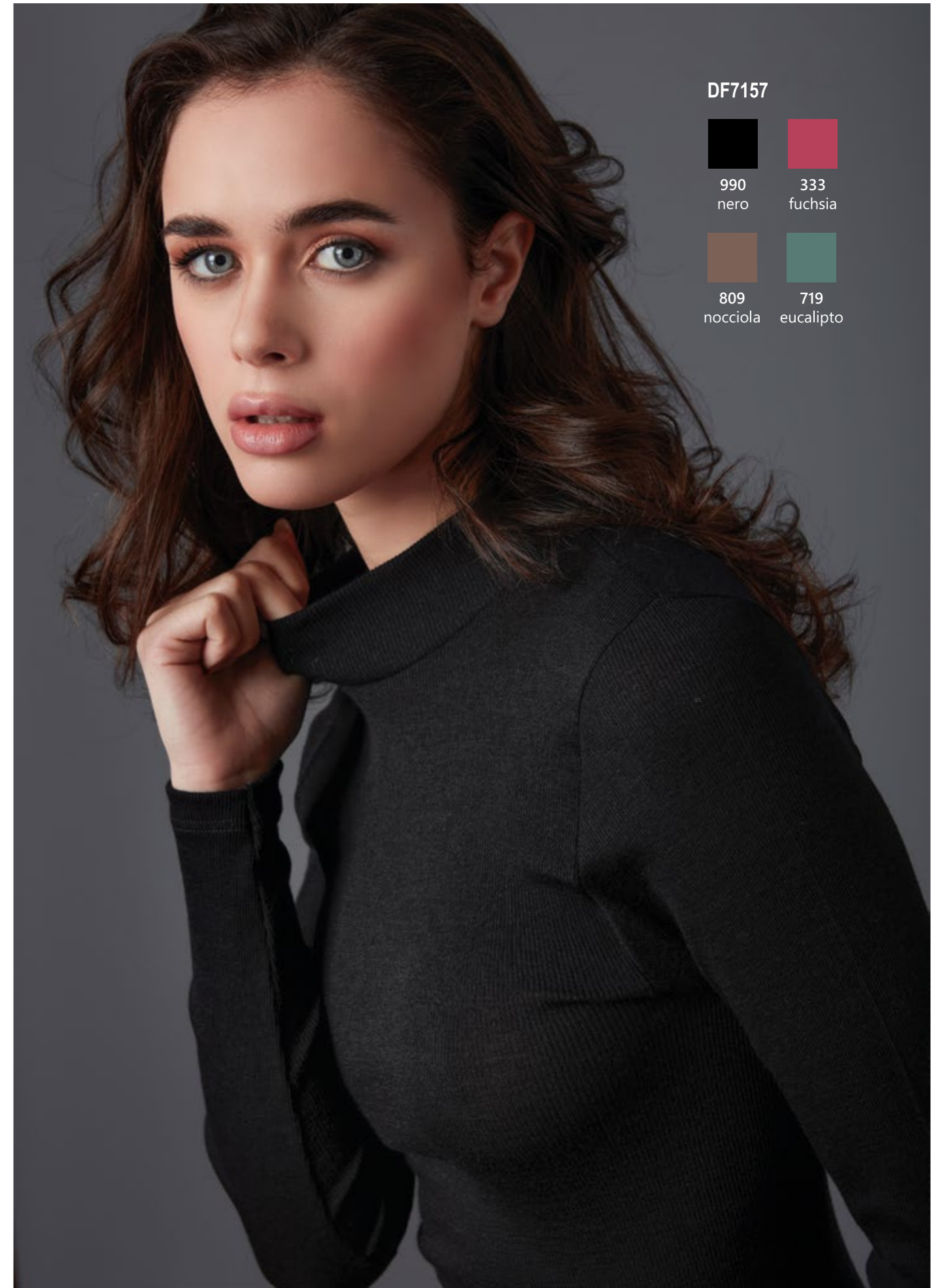


719
eucalipto



DF7156

- | | |
|---|---|
|  |  |
| 990 nero | 333 fuchsia |
|  |  |
| 809 nocciola | 719 eucalipto |



DF7157

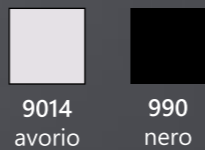
- | | |
|---|---|
|  |  |
| 990 nero | 333 fuchsia |
|  |  |
| 809 nocciola | 719 eucalipto |

fraty[®]
1964



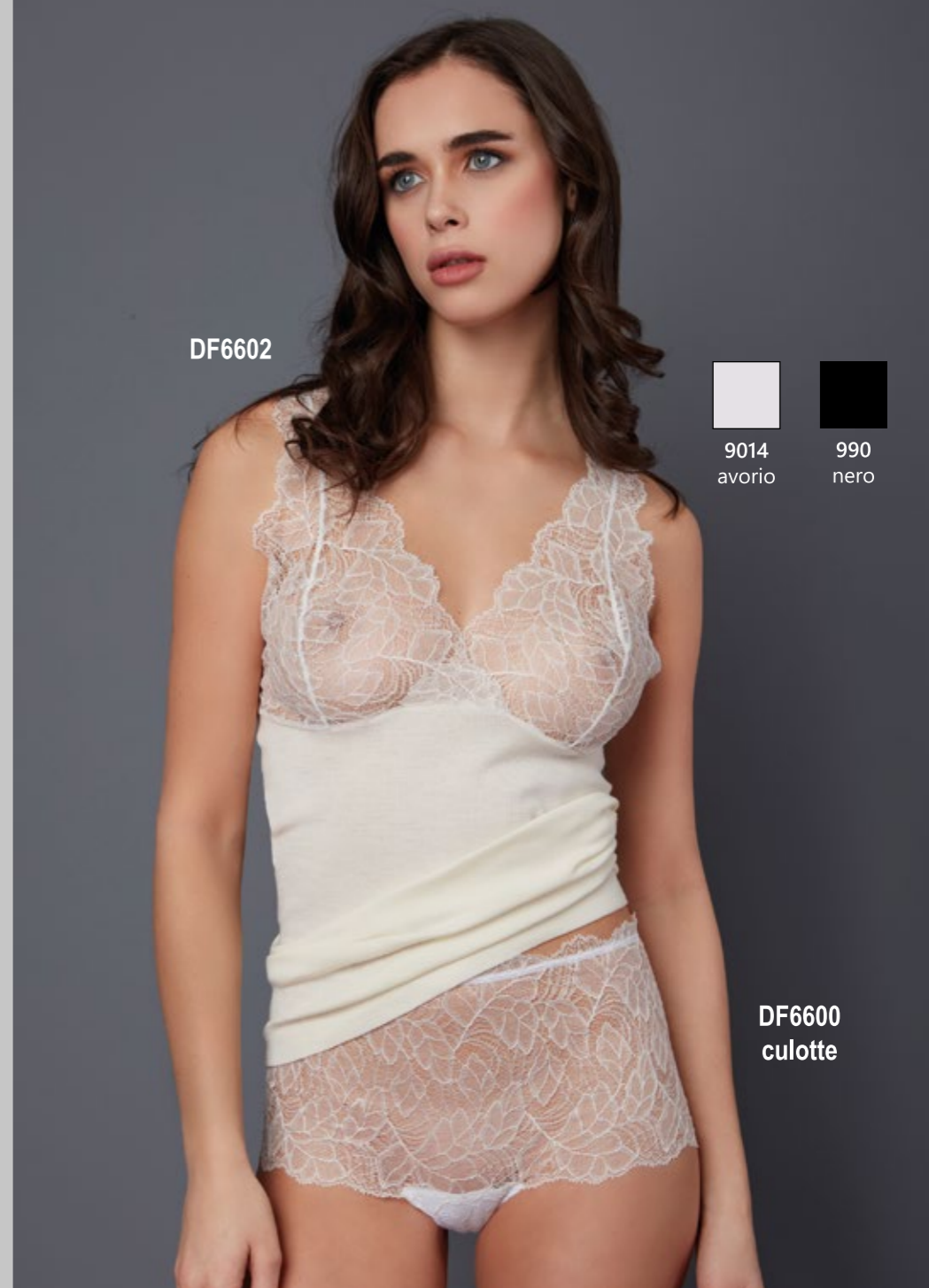
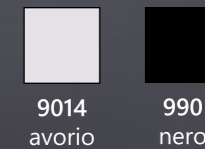
Glicine
Viscosa Lana

DF6601



DF6600
culotte

DF6602



DF6600
culotte



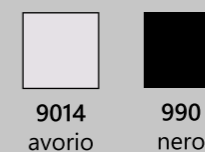
DF6588



DF6589



DF6590





fratry[®]
1964

Charme

Micromodal Cachemire

DF1900



9014
avorio



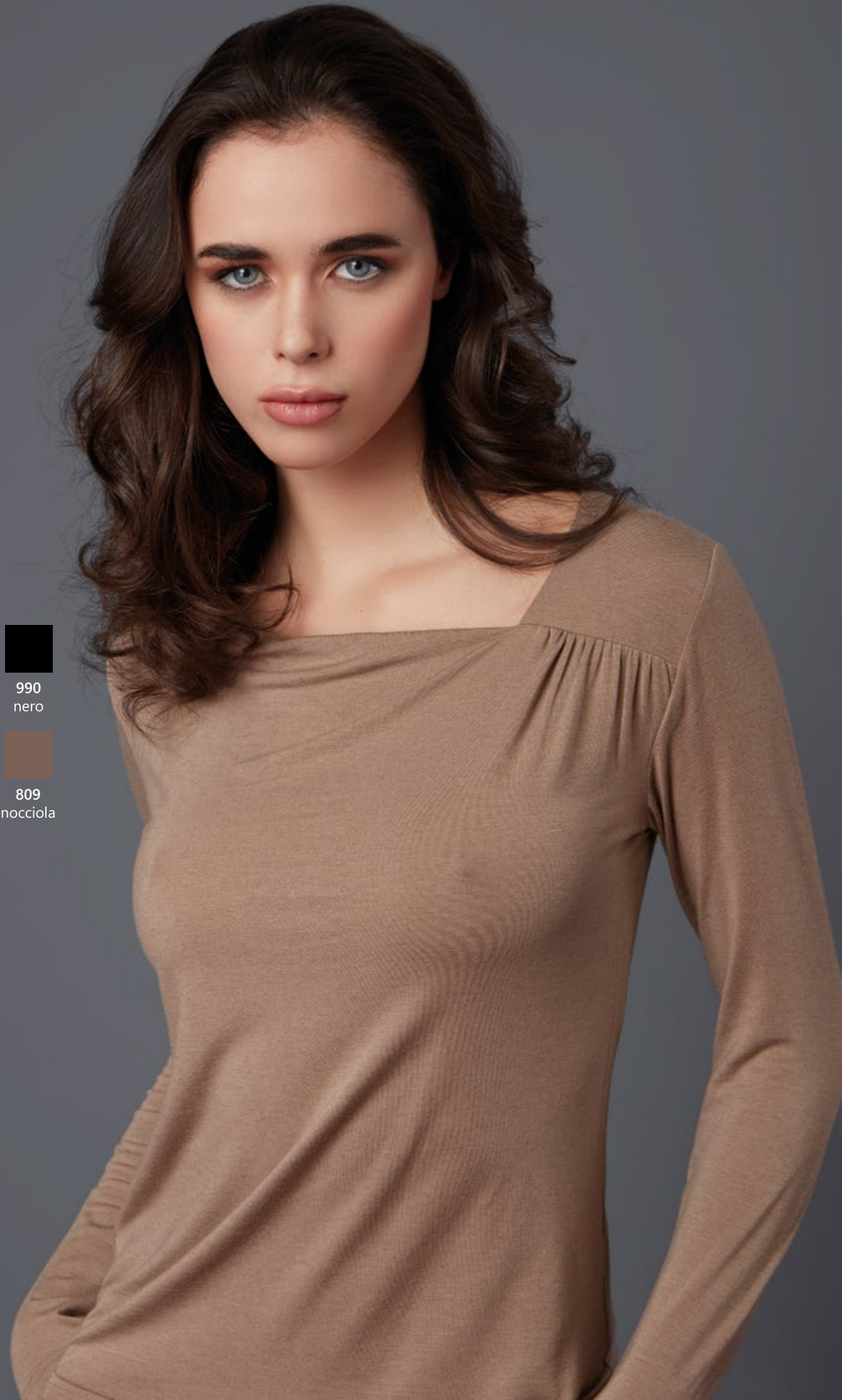
990
nero



333
fuchsia



809
nocciola



DF1901



9014
avorio



990
nero



333
fuchsia



809
nocciola

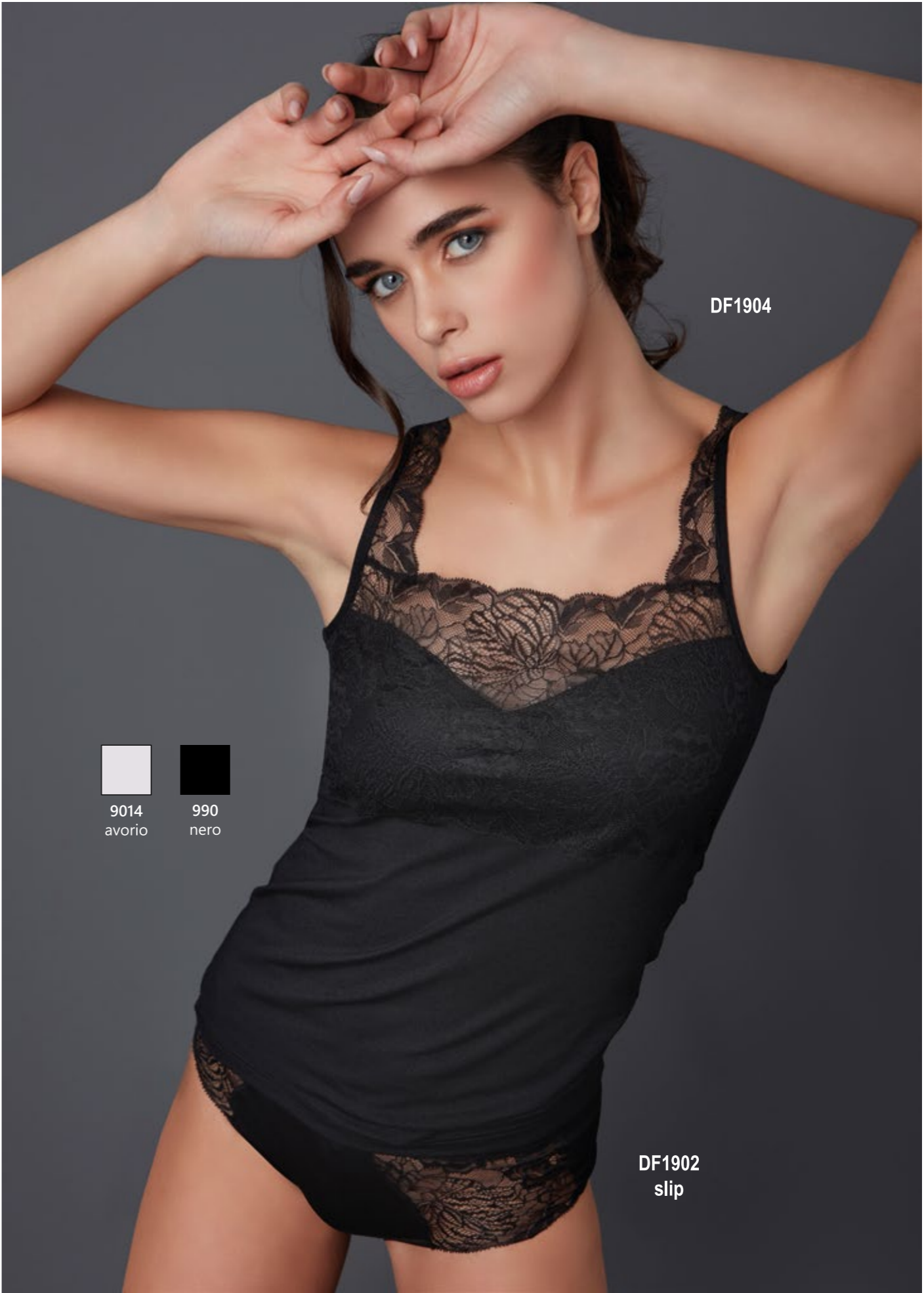




DF1903

9014 avorio
990 nero

DF1902
slip



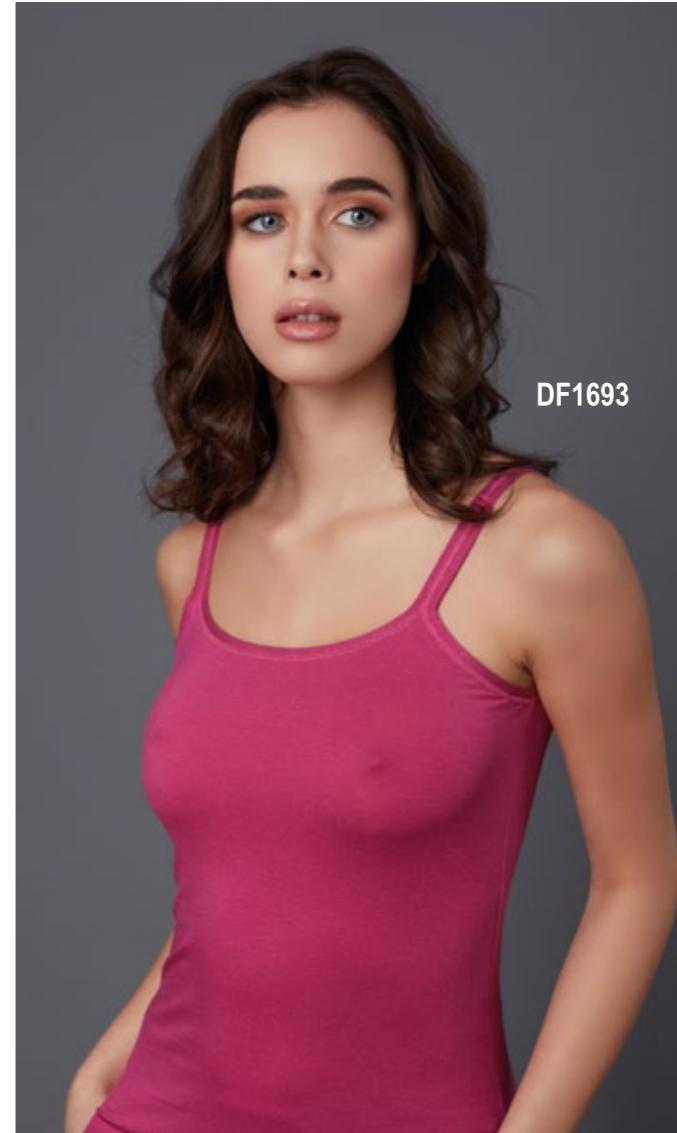
DF1904

9014 avorio
990 nero

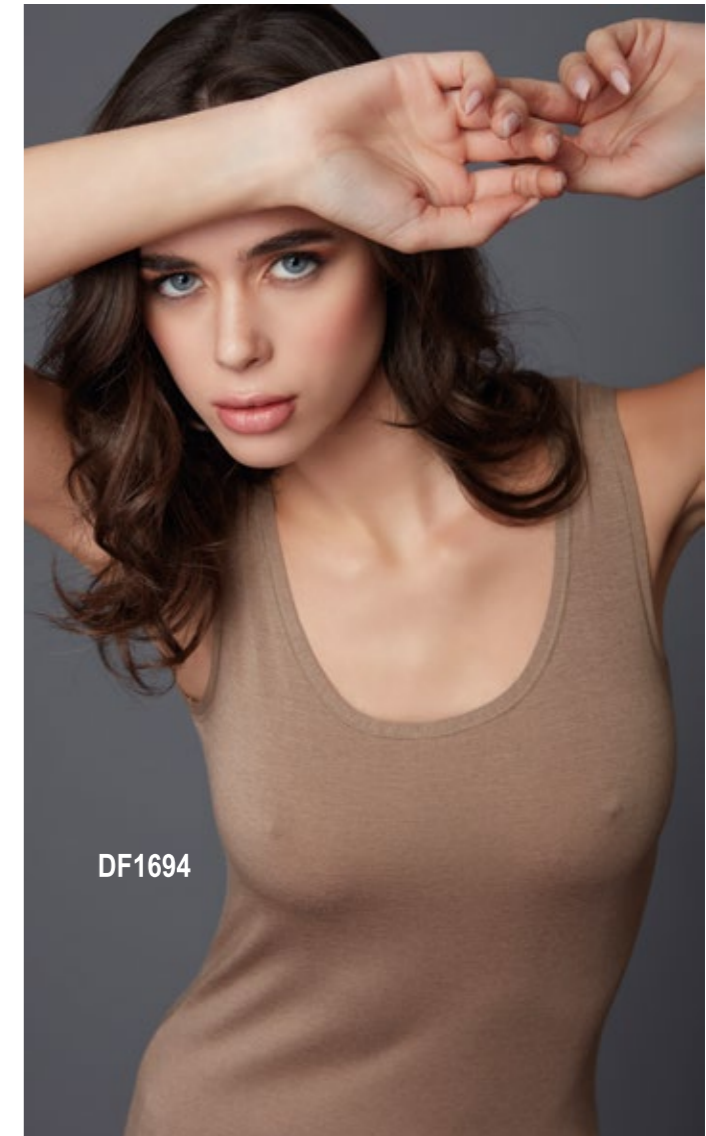
DF1902
slip



DF1695



DF1693



DF1694



9014
avorio



990
nero



333
fuchsia



809
nocciola



DF1696



9014
avorio



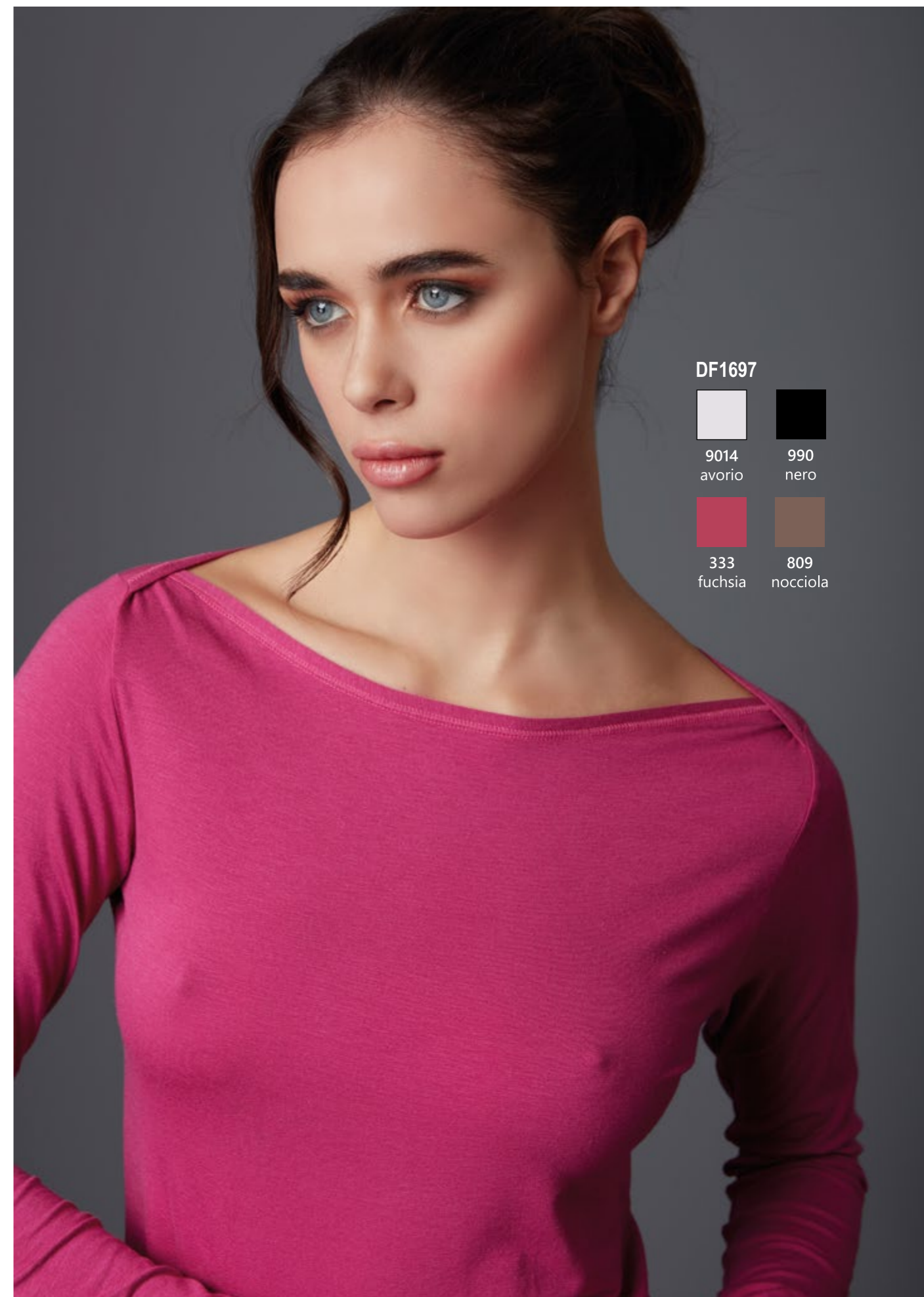
990
nero



333
fuchsia



809
nocciola



DF1697



9014
avorio



990
nero



333
fuchsia



809
nocciola

fraty[®]
1964



Violetta
Viscosa Satin



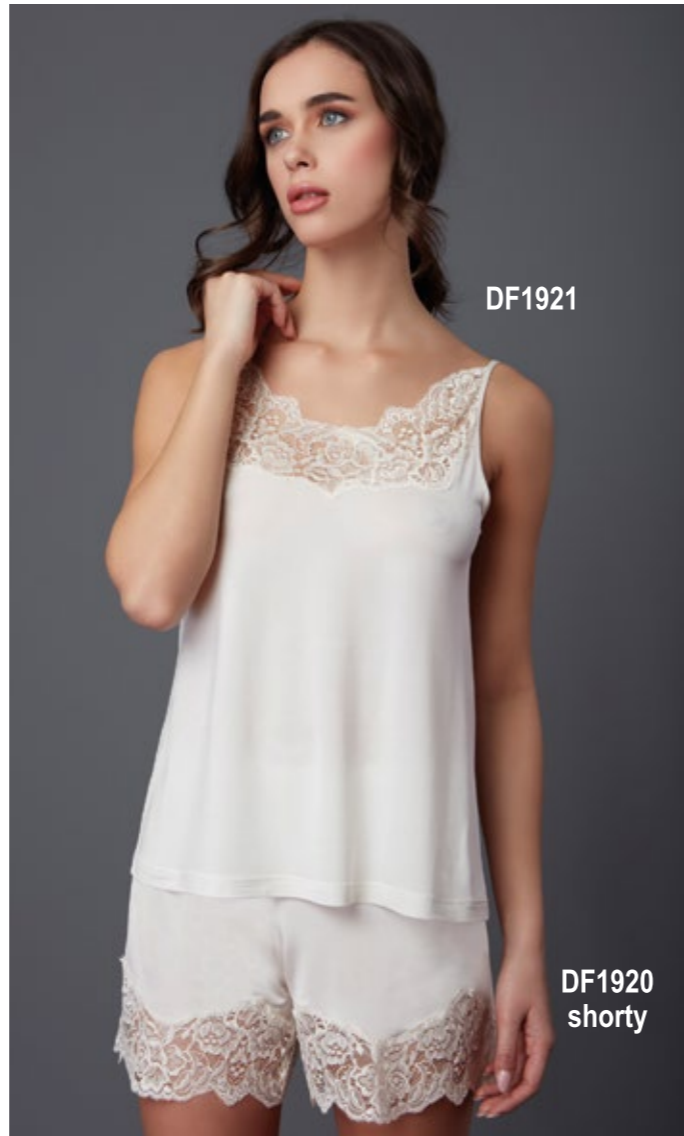
DF1919 slip



9014
avorio



990
nero



DF1921

DF1920
shorty

DF1922



9014
avorio



990
nero

fratly[®]
1964





DF1923



9014
avorio



990
nero



DF1924



9014
avorio



990
nero

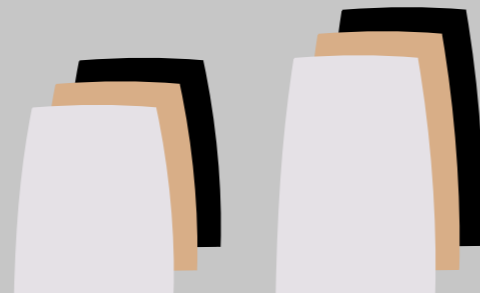


DF1357

| | | | |
|--------|------|------|------|
| | | | |
| 9014 | 133 | 6450 | 990 |
| avorio | nudo | blue | nero |

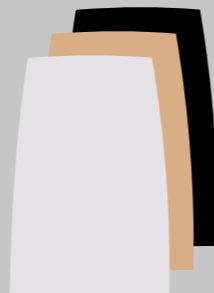


DF1448



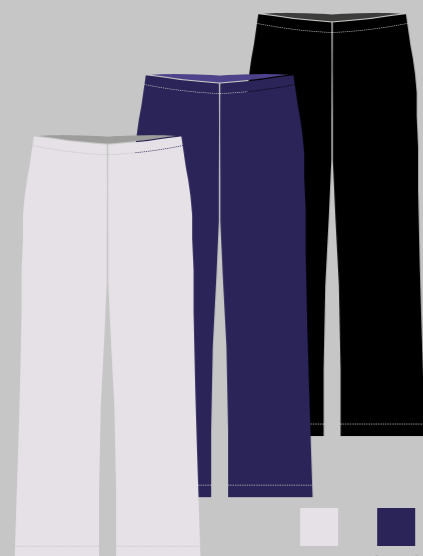
DF1449

| | | |
|--------|------|------|
| | | |
| 9014 | 133 | 990 |
| avorio | nudo | nero |



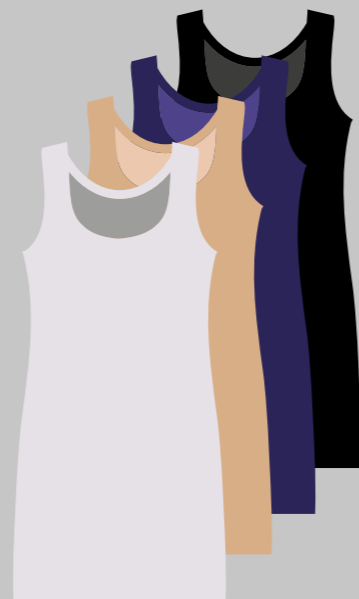
DF1455

| | | | |
|--------|------|------|------|
| | | | |
| 9014 | 133 | 6450 | 990 |
| avorio | nudo | blue | nero |



DF1468

| | | |
|--------|------|------|
| | | |
| 9014 | 6450 | 990 |
| avorio | blue | nero |



DF1456



| | |
|--------|------|
| | |
| 9014 | 990 |
| avorio | nero |



DF1670



DF1671



DF1672

fraty[®]
1964



Charlize
Micromodal

DF1890



990
nero



332
rosa
pesca



943
grigio
perla



DF1891



990
nero



332
rosa
pesca



943
grigio
perla





DF1892



990
nero



332
rosa
pesca



943
grigio
perla



DF1893



990
nero



332
rosa
pesca



943
grigio
perla



fratelli[®]
1964

Kristen
Micromodal

DF1915



990
nero



332
rosa
pesca



943
grigio
perla



DF1916



990
nero



332
rosa
pesca



943
grigio
perla



DF1917



990
nero



332
rosa
pesca



943
grigio
perla



DF1918



990
nero



332
rosa
pesca



943
grigio
perla





fraty[®]
1964

Natalie
Viscosa Lana

fraty[®]
1964



DF1894



810 sabbia 610 indaco 990 nero



DF1895



810 sabbia 610 indaco 990 nero



DF1896



810
sabbia



610
indaco



990
nero



DF1897



810
sabbia



610
indaco



990
nero



Venus

Felpa



990
nero



9047
grey



DF1911

DF1913

DF1912



990
nero



9047
grey

DF1914

DF1905



990
nero

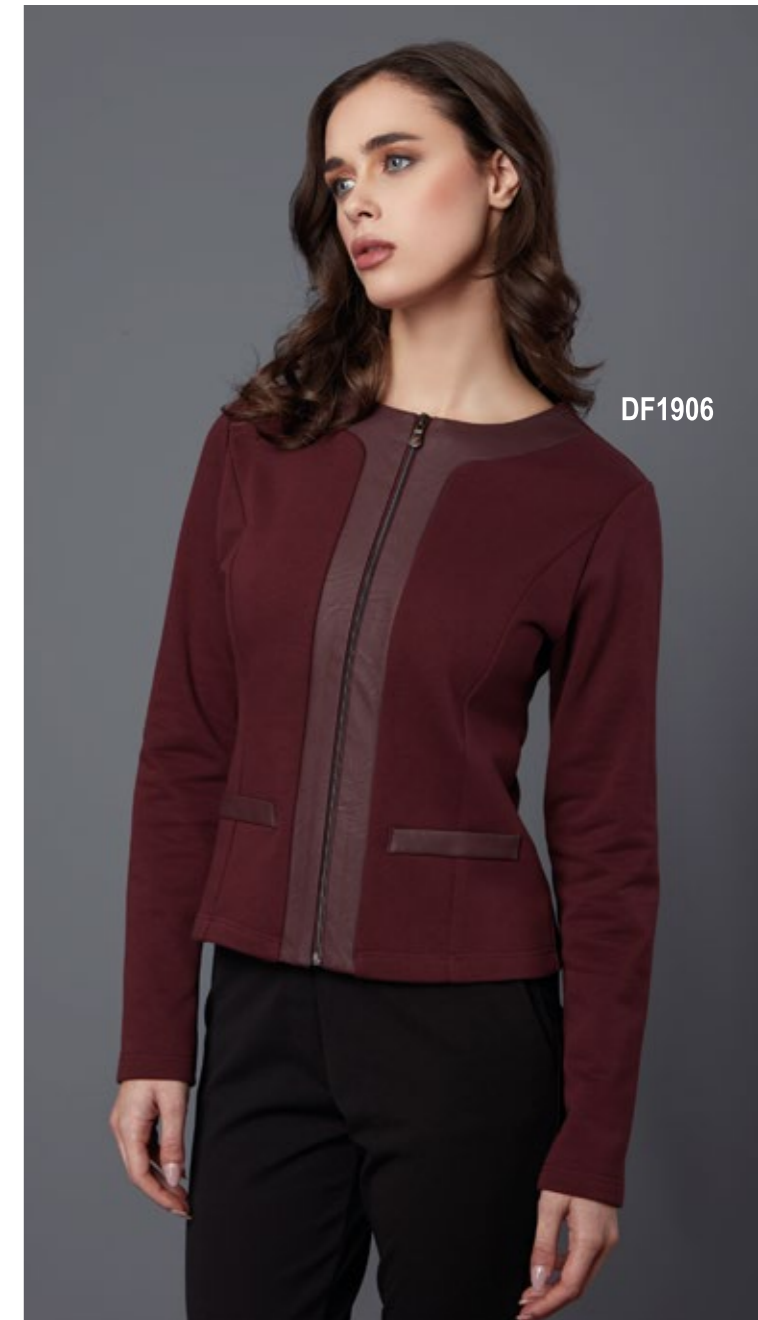


9047
grey



409
burgundy

DF1906





DF1908

DF1909



990
nero



9047
grey



409
burgundy



DF1907

DF1910



990
nero



9047
grey



409
burgundy

Rachel

Viscosa Lana

fratelli®
1964



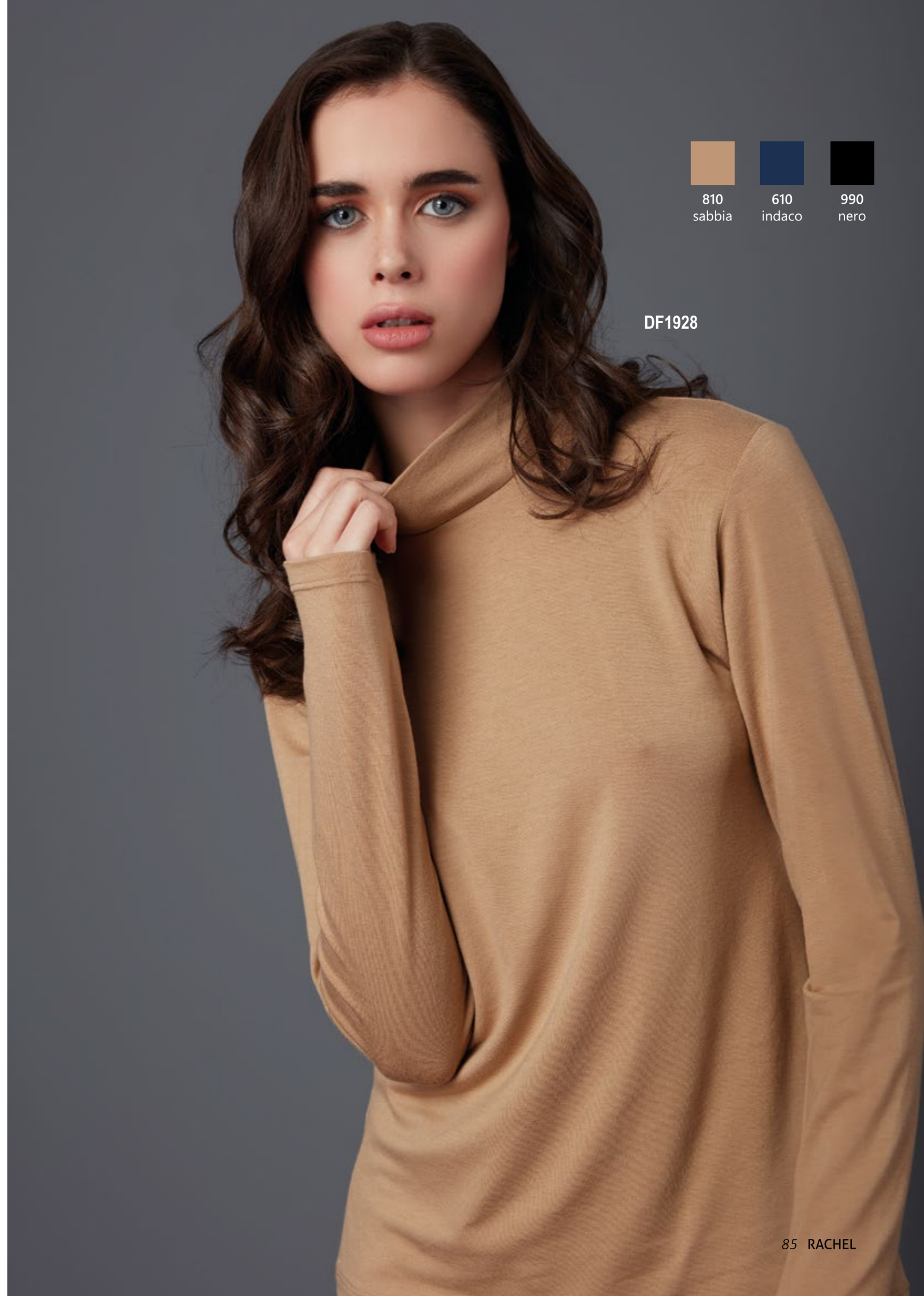
810
sabbia



610
indaco



990
nero



Orchidea

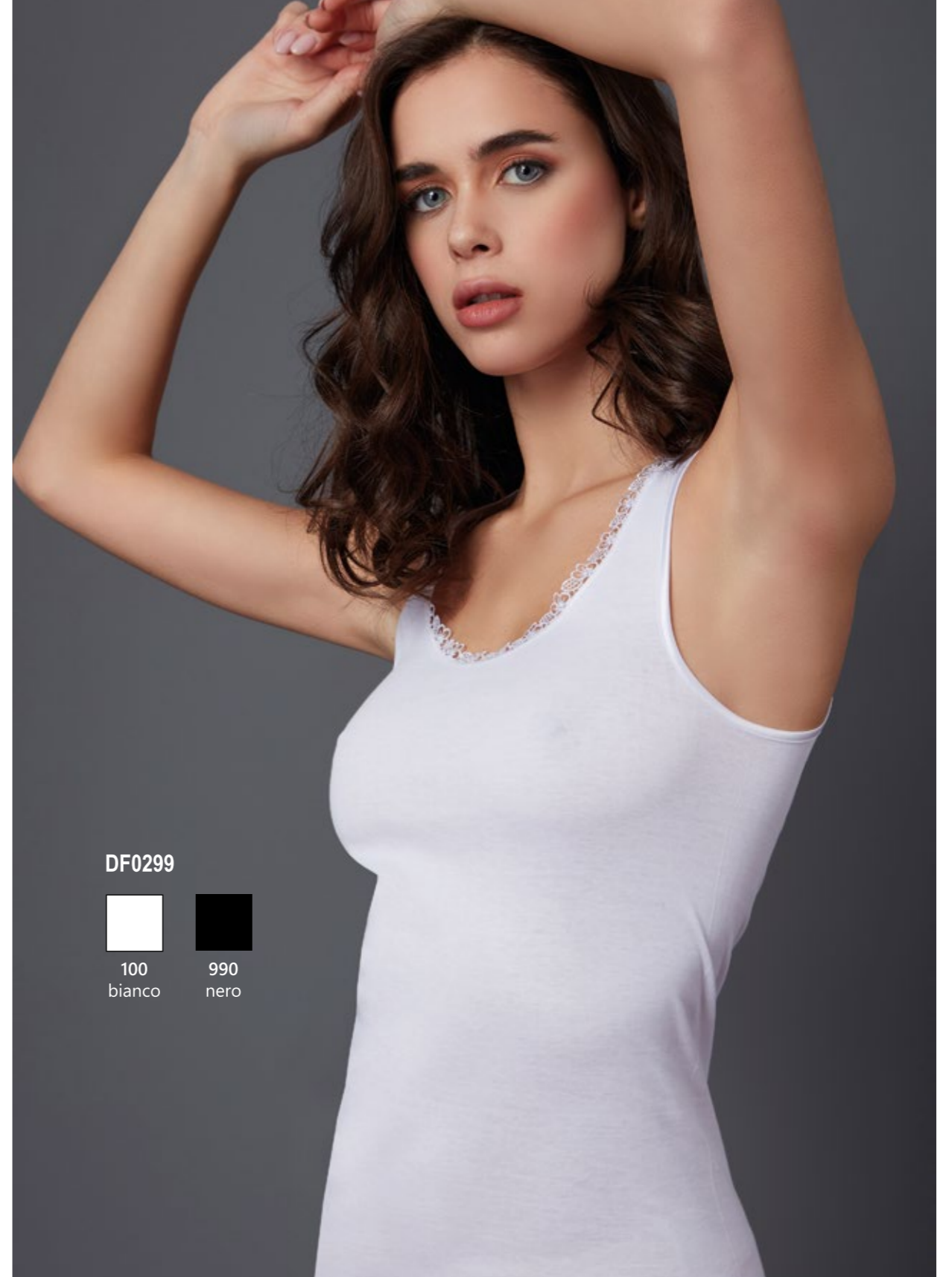
DF0300



100
bianco



990
nero



DF0299



100
bianco



990
nero

fratelli[®]
1964

Shape

New Secret

DF0057



DF0056



100
bianco



990
nero

DF0058



DF0059



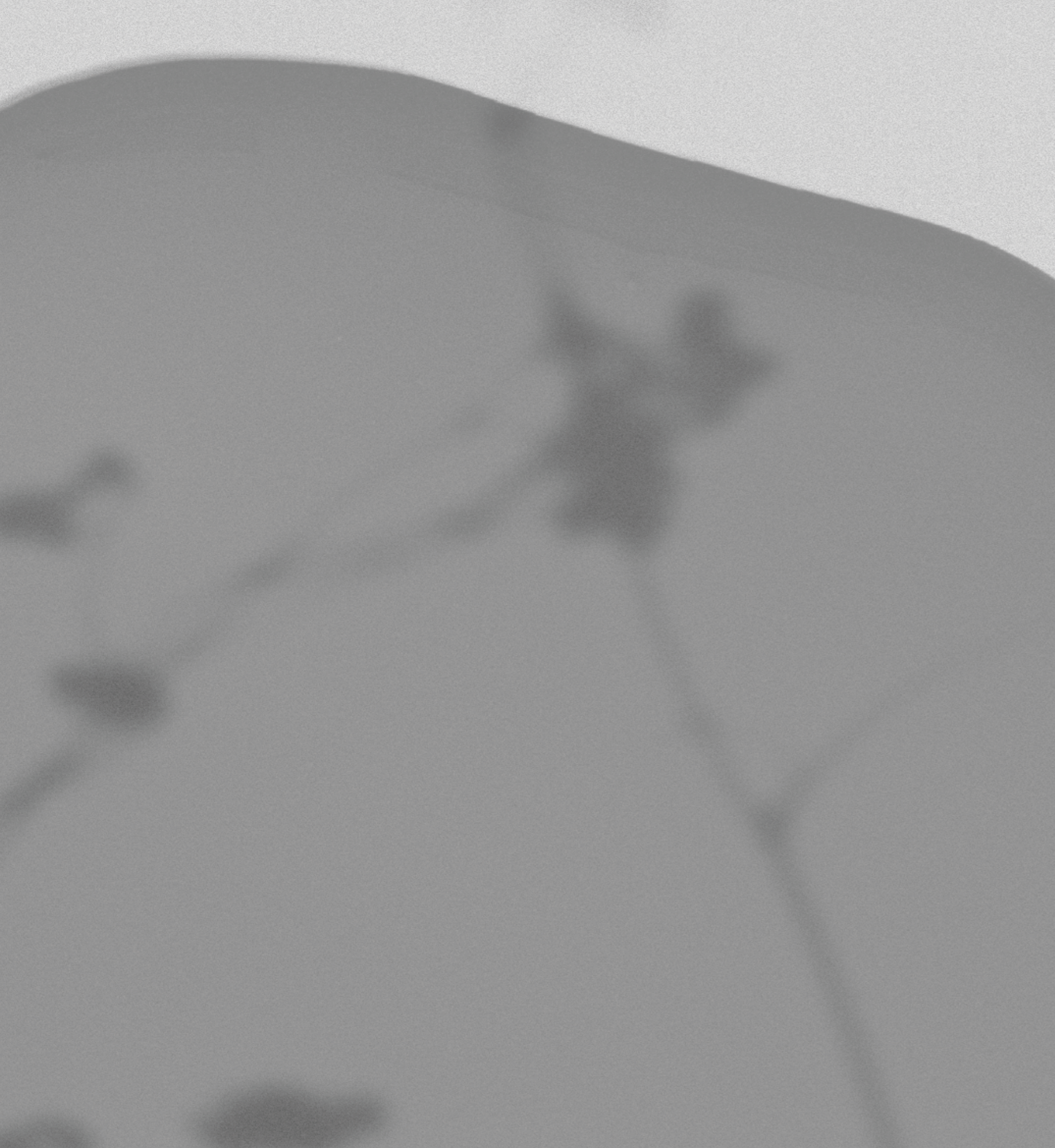
100
bianco



133
nudo



990
nero



fratelli®
1964



fraly
1964

Sistema Tessile s.r.l.
Bergamo (Italy)

T + 39 035 575707

F + 39 035 573701

info@fraly.it www.fraly.it